

# B230

**NEW**

+135°  
-30°

PA6  
+G.F.

UL94  
HB

RoHS  
COMPLIANT

## "EUROMODEL" SAFETY HANDLE WITH THROUGH HOLES AND CENTRAL CAP

MODELLO DEPOSITATO

### Materials:

Reinforced polyamide.  
Resistant to oils and greases.

### Surface finish:

Satin.

### Colour:

Black (RAL 9011).

### Standard cap:

Rectangular cap in orange polyamide (RAL 2004 code 02).

### Alternative cap colours:

Grey (RAL 7035 cod. 13).  
Blue (RAL 5015 cod. 07).  
Yellow (RAL 1021 cod. 10).  
Red (RAL 3000 cod. 16).  
Green (RAL 6024 cod. 17).  
Black (RAL 9011 cod. 01).

### Hole:

Smooth through hole obtained by moulding the plastic.

### Version TS:

Seat for countersunk screw DIN 7991 / UNI 5933.

### Version TC:

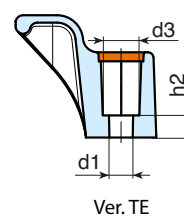
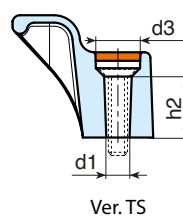
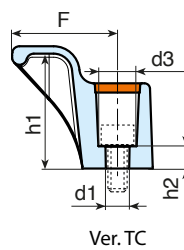
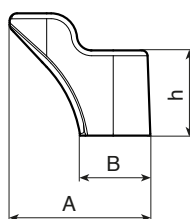
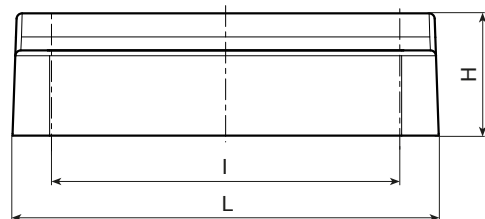
Seat for cylindrical head screw DIN 912 / UNI 5931.

### Version TE:

Seat for hex head screw DIN 933 / UNI 4017, or for nut DIN 934 / UNI 5588.

### Special requests:

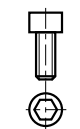
- Upon request and for special quantities available in the colours indicated in the chart [page 805].



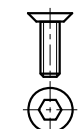
Ver. TC

Ver. TS

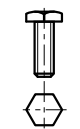
Ver. TE



DIN 912



DIN 7991



UNI 5727

### Version TC: with hole for cylindrical head screws

art.	L	I	H	F	h	h1	h2	A	B	d3	d1	g
B230094.TG06.50102TC	115	94	33	28,5	23	31	6	38	19	10,3	6,5	54

### Version TS: with hole for countersunk head screws

art.	L	I	H	F	h	h1	h2	A	B	d3	d1	g
B230094.TG06.50102TS	115	94	33	28,5	23	31	16,3	38	19	11,9	6,5	54

### Version TE: with hole for hex head screws

art.	L	I	H	F	h	h1	h2	A	B	d3	d1	g
B230094.TG06.50102TE	115	94	33	28,5	23	31	6	38	19	10	6,5	54