

# B330 CIN



**INOX**

## HANDLE WITH STAINLESS STEEL TUBE D. 30

**Materials:**

**Plastic End Bracket:**

Reinforced polyamide. Oils and greases resistant.

**Tube:**

Stainless steel AISI 304.

**Surfaces:**

**Plastic End Bracket:**

Satin. Colour black (RAL 9011).

**Tube:**

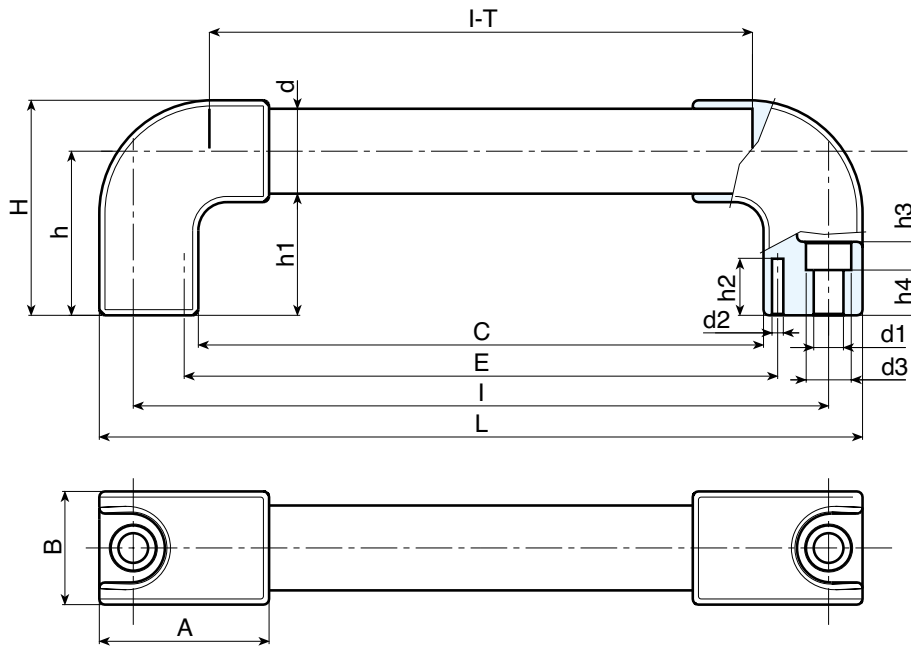
Glossy natural steel.

**Hole:**

Smooth right through hole obtained by moulding the plastic.

**SPECIAL REQUEST:**

- It is possible to supply the handle with different lengths on request and for quantities.
- It is possible to provide screw cover plugs on request.
- It is possible to supply colours as shown in the table at pag. B-22, on request and for quantities.



art.	L	I	C	E	A	B	T	H	h	h1	h4	h3	h2	d	d1	d3	d2	g	F1 (N)	F2 (N)
☹ B330200.TG3001CIN	224	200	154	164	60	40	54	77	58	43	16	11	19	30	10,5	16	4	235	3400	2900
☹ B330250.TG3001CIN	274	250	204	214	60	40	54	77	58	43	16	11	19	30	10,5	16	4	250	3800	3200
☹ B330300.TG3001CIN	324	300	254	264	60	40	54	77	58	43	16	11	19	30	10,5	16	4	270	3200	2900
☹ B330350.TG3001CIN	374	350	304	314	60	40	54	77	58	43	16	11	19	30	10,5	16	4	285	2700	2400
☹ B330400.TG3001CIN	424	400	354	364	60	40	54	77	58	43	16	11	19	30	10,5	16	4	305	2400	2200
☹ B330500.TG3001CIN	524	500	454	464	60	40	54	77	58	43	16	11	19	30	10,5	16	4	340	1900	1700
☹ B330600.TG3001CIN	624	600	554	564	60	40	54	77	58	43	16	11	19	30	10,5	16	4	370	1600	1400
☹ B330700.TG3001CIN	724	700	654	664	60	40	54	77	58	43	16	11	19	30	10,5	16	4	405	1400	1250

