

B340



PA6
+GF

UL94
HB



HANDLE WITH CURVED LATERAL ALUMINUM TUBE D. 20

Materials:

(1) Plastic End Bracket:

Reinforced polyamide. Oils and greases resistant.

(2) Tube:

Aluminum alloy 6060.

Surfaces:

(1) Plastic End Bracket:

Satin. Colour black (RAL 9011).

(2) Tube:

Painted with black epoxy powder.

Silver colour code 99 (RAL9006).

Marbled black code 01.

Hole:

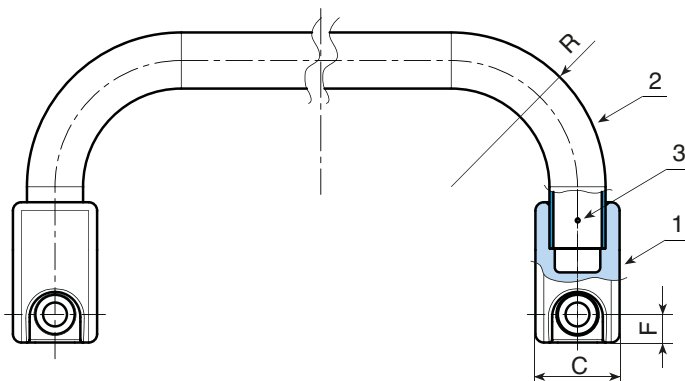
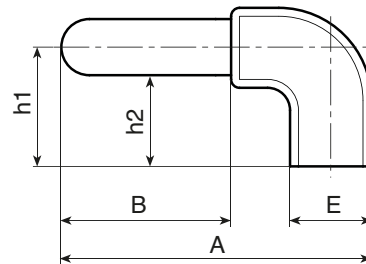
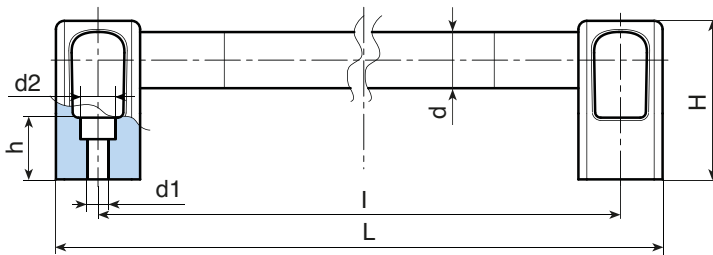
Smooth right through hole obtained by moulding the plastic.

Fixing:

The pipe is fixed to the plastic end bracket by an armonic steel elastic pin (3) \varnothing 6X27, positioned on the bottom side of the end bracket.

SPECIAL REQUEST:

- It is possible to supply the handle with different lengths on request and for quantities.
- It is possible to provide screw cover plugs on request.
- It is possible to supply colours as shown in the table at pag. B-35, on request and for quantities.



B340: Black marbled painted version code 01

art.	I	L	d	d2	A	B	C	E	F	H	h	h1	h2	R	d1	g
B340200.TG200101	200	230	20	14,5	110,5	60,5	30	29	10	57	19,5	42,5	32,5	55	8,5	158
B340300.TG200101	300	330	20	14,5	110,5	60,5	30	29	10	57	19,5	42,5	32,5	55	8,5	183
B340500.TG200101	500	530	20	14,5	110,5	60,5	30	29	10	57	19,5	42,5	32,5	55	8,5	226

B340: Silver 9006 painted version code 99

art.	I	L	d	d2	A	B	C	E	F	H	h	h1	h2	R	d1	g
B340200.TG200199	200	230	20	14,5	110,5	60,5	30	29	10	57	19,5	42,5	32,5	55	8,5	158
B340300.TG200199	300	330	20	14,5	110,5	60,5	30	29	10	57	19,5	42,5	32,5	55	8,5	183
B340500.TG200199	500	530	20	14,5	110,5	60,5	30	29	10	57	19,5	42,5	32,5	55	8,5	226

