

# D161



PA6  
+GF

UL94  
HB



## TAPERED HANDWHEEL WITH SMOOTH OR THREADED HOLE

### Material:

Reinforced polyamide.  
Oils and greases resistant.

### Surface:

Satin.

### Colour:

Black (RAL 9011).

### Main Insert:

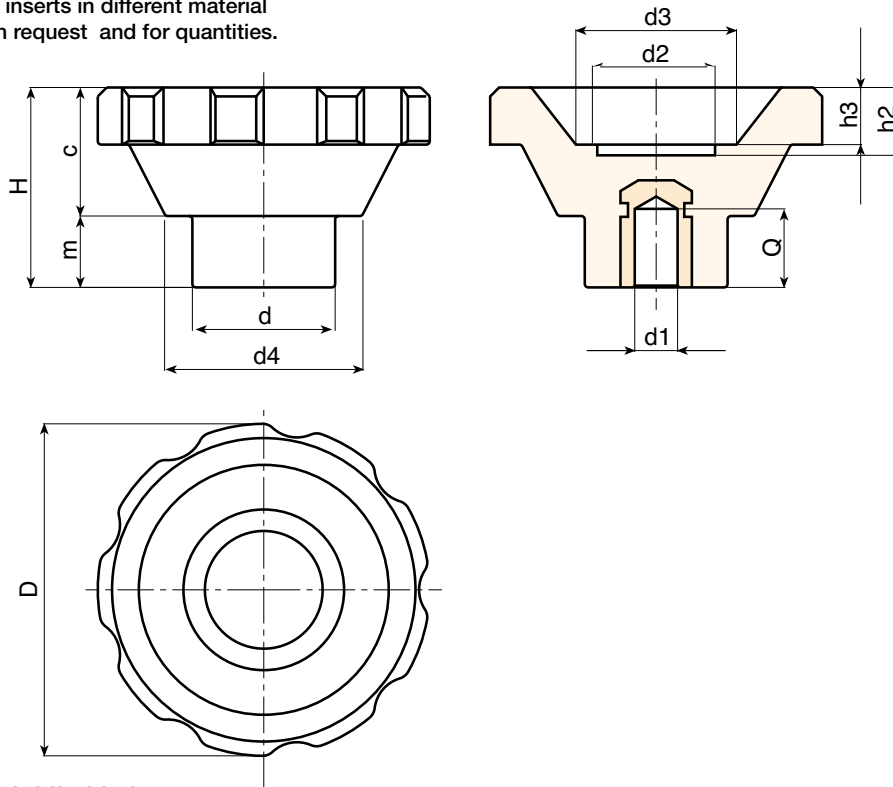
**Version TD:** Zinc plated steel insert with smooth through-hole (H11 tolerance).

**Version TM:** Zinc plated steel insert with threaded through-hole (6H tolerance).

For fixing system, or execution of keyway or square holes, please refer to the technical notes attached to the catalogue.

### SPECIAL REQUEST:

- It's possible to supply the inserts with d1 bore by customer design, on request and for quantities.
- It's possible to supply the inserts in different material and treatment-finishes, on request and for quantities.



### Version TD with smooth blind hole.

Art.	D	H	d	c	m	d2	d3	d4	h2	h3	Dm	d1 H11	Q	g
D16195.TD0501	93	56,5	40	36,5	20	32	45	55,5	20	17	22	5	27	340

**Attention:** bore d1 (H11 tolerance) could be produced by request, with 50 pieces minimum.

**Dm** = It's possible to increase the hole, by boring, until Dm (enlarge).

### Version TM with threaded blind hole.

Art.	D	H	d	c	m	d2	d3	d4	h2	h3	d1 6H	Q	g
D16195.TM1201	93	56,5	40	36,5	20	32	45	55,5	20	17	M12	25	338

**Attention:** bore d1 (6H tolerance) could be produced by request, with 50 pieces minimum.

**D - CONTROL  
HANDWHEELS**

ver. DUK.10-0113



**BOTECA**

D - 18

Presumable presence in the stock in %

(☺) 90% (☹) 40% (⊖) 5% (⊗)

www.boteco.it - © All right reserved - BOTECA®  
Any unauthorized reproduction is strictly forbidden