

# D601

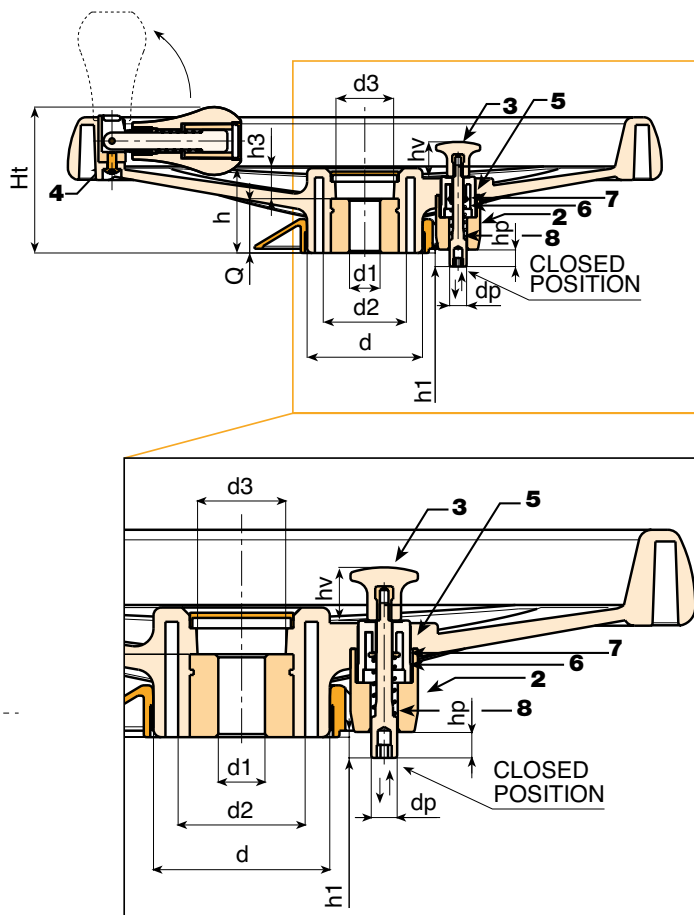
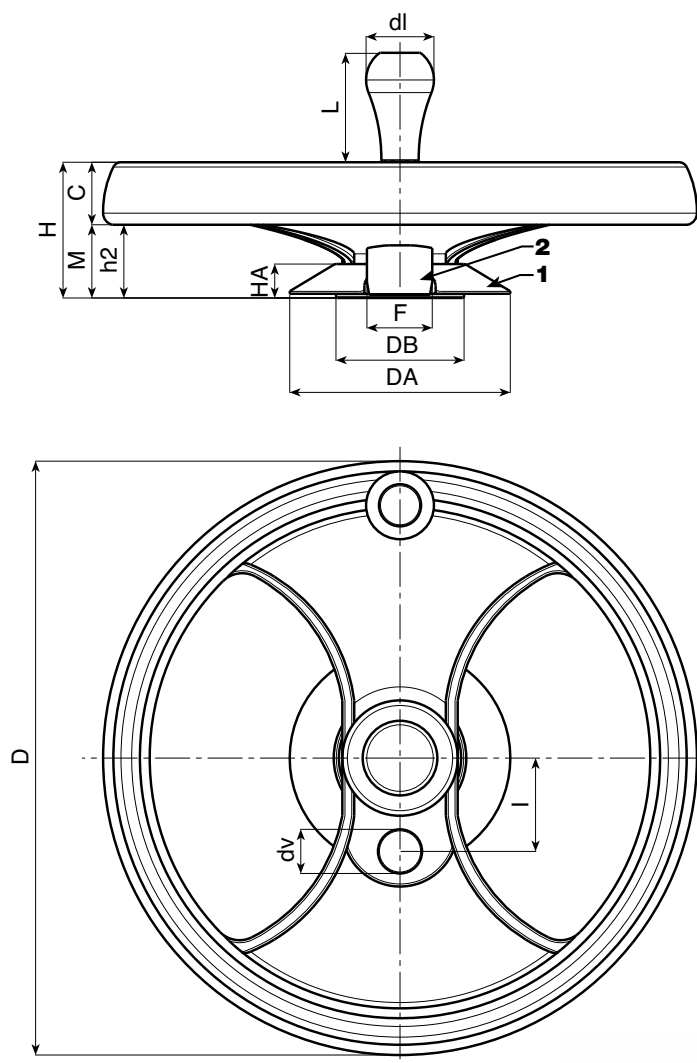


PA6  
+GF

UL94  
HB





## 2 SPOKE CONTROL HANDWHEEL WITH REVOLVING FOLDAWAY HANDLE AND LOCKING PISTON



art. D601

This type of product is an evolution of our traditional handwheel D207-350. By simply adding a special assembly kit this product can be adapted for use in a special market sector: that of compact shelving (sliding storage systems on rails). This handgrip is suitable for handling shelving on rails. A locking device or piston is used to lock, stop, position the shelving units in specific positions.



	Art.	D	H	Ht	h	d	M	C	h2	h3	d2	d3	Dm	d1	H11	Q	 g
	D601350.TD..01P	346	80	86	49,5	67,5	24	56	43,5	17,5	49	35	28	A.R.	32	1800	
		I	dv	hv	h1	dp	hp	DA	HA	DB	F						
		55	20	21	8	10	10	131	20	76	38						

Dm = It's possible to increase the hole, by boring, until Dm (enlarge). A.R. = By request

**D - CONTROL  
HANDWHEELS**

ver. DUK.10-0113



**BOTECA**

D - 10

Presumable presence in the stock in %

(☹) 90% (😊) 40% (😐) 5% (☹)

www.boteca.it - © All right reserved - BOTECA®  
Any unauthorized reproduction is strictly forbidden

# 2 SPOKE CONTROL HANDWHEEL WITH REVOLVING HANDLE AND LOCKING PISTON

## D602



### Material:

Reinforced and stabilised polyamide. Oils and greases resistant.

**Surface:** Satin.

**Colour:** Black (RAL 9011).

**Central Cap:** Grey polyamide (RAL 7035 cod. 13).

### Alternative Cap Colour:

Orange (RAL 2004 cod. 02)

Blue (RAL 5015 cod. 07)

Yellow (RAL 1021 cod. 10)

Red (RAL 3000 cod. 16)

Green (RAL 6024 cod. 17)

Black (RAL 9011 cod. 01)

### Locking Piston Kit:

(1) PA6+GF hole cover ring. Black (RAL 9011).

Push-fit assembly. Removable.

(2) PA6+GF piston holder. Black (RAL 9011). Assembly with two

self-tapping, galvanised steel screws, screwdriver head 3.5x30.

(3) PA6+GF gear stick d. 26 with M4 brass female threaded insert and positioning brackets.

Black (RAL 9011).

(5) PA6+GF gear stick support with positioner. Black (RAL 9011).

(6) Galvanised steel return spring.

(7) Galvanised steel washer.

(8) Galvanised steel locking piston. Seat for Allen wrench no. 5 for fastening. Piston stroke 10 mm.

Useful projection from handwheel 8 mm.

### Inserts:

(1) Customised galvanised steel through-hole insert.

(4) Black-oxide treated hexagon socket button head screw ISO 7838 for fastening handle.

(9) (art. D602) Black-oxide treated steel insert with hexagonal threaded through-hole.

### Side Handle:

(art. D601) Flush, foldaway revolving handle, with hexagonal connection. Made from reinforced

polyamide (shape same as art. M202). Black-oxide treated internal mechanism.

Fixing by means of black-oxide treated hexagon socket button head screw ISO 7838.

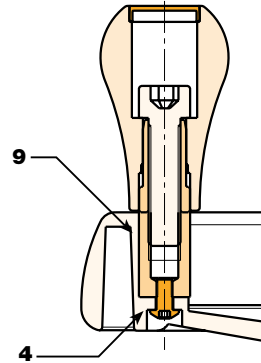
Grey polyamide push fit cap (RAL 7035 code 13).

(art. D602) Revolving handle Art. M202 (see Chapter M on page 18).

*For fixing system, or execution of keyway or square holes, please refer to the technical notes attached to the catalogue.*



### SPECIAL REQUEST:

- It's possible to supply the inserts with d1 bore by customer design, on request and for quantities.
- It's possible to supply the inserts in different material and treatment-finishes, on request and for quantities.
- It's possible to supply the products with colours (reduced range) as shown in the table at page D-19, on request and for quantities.



**art. D602**



	Art.	D	H	Ht	h	d	M	C	h2	h3	d2	d3	Dm	d1	H11	Q	 g
	D602350.TD..01P	346	80	86	49,5	67,5	24	56	43,5	17,5	49	35	28	A.R.	32	1800	
	I	dv	hv	h1	dp	hp	DA	HA	DB	F							
	55	20	21	8	10	10	131	20	76	38							

**Dm** = It's possible to increase the hole, by boring, until Dm (enlarge). **A.R.** = By request

Presumable presence in the stock in %

(☺) 90% (☹) 40% (☹) 5% (☹)

BOTECO® - © All right reserved - [www.boteco.it](http://www.boteco.it)

Any unauthorized reproduction is strictly forbidden



**BOTECO**

D - 11

**D - CONTROL  
HANDWHEELS**

ver. DUK.10-0113