

D779



PA6
+GF

UL94
HB



LIGHT CONTROL HANDWHEEL WITH REVOLVING HANDLE

Material:

Reinforced polyamide.
Oils and greases resistant.

Surface:

Satin.

Colour:

Black (RAL 9011).

Main Insert:

Zinc plated steel insert with smooth
through-hole (H11 tolerance).

Side Insert:

Brass right through threaded bush.

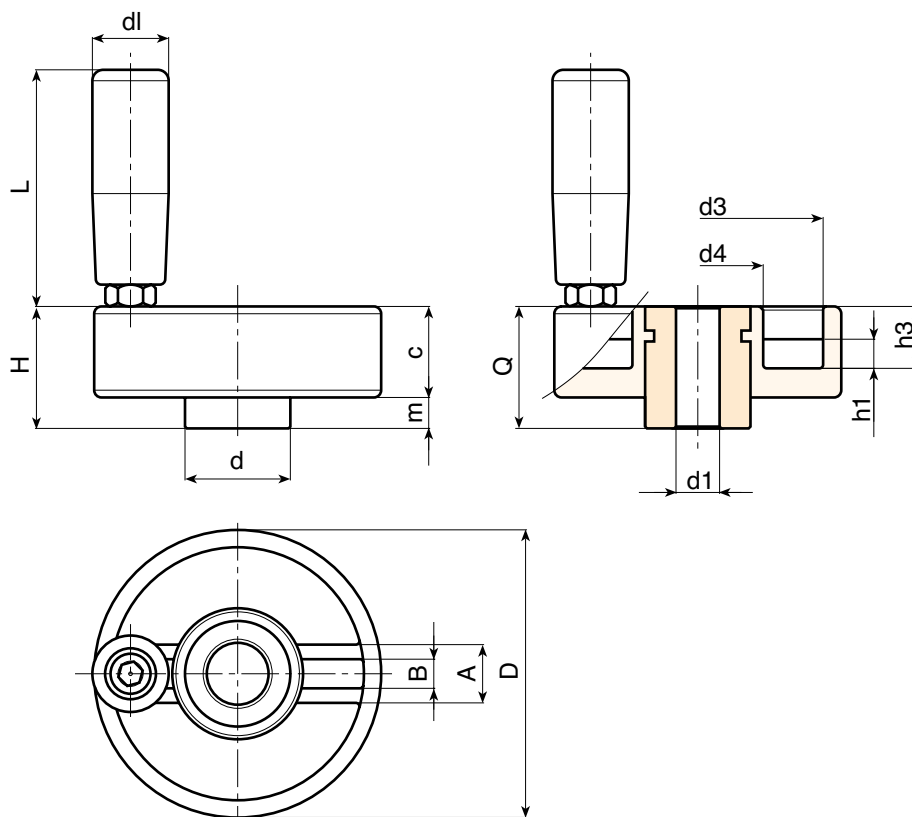
Side handle:

Revolving handle M144 (pag. M-06).

*For fixing system, or execution of keyway or
square holes, please refer to the technical
notes attached to the catalogue.*

SPECIAL REQUEST:

- It's possible to supply the inserts with d1
bore by customer design, on request and
for quantities.
- It's possible to supply the inserts in different
material and treatment-finishes, on request
and for quantities.
- It's possible to supply the products with
colours (reduced range) as shown in the
table at page D-19, on request and
for quantities.



Version with zinc plated insert and H11 tolerance bore

Art.	D	H	d	c	m	h1	h3	A	B	d3	d4	dl	L	Dm	d1 H11	Q	g
D77980.TD0801P	80	34	29	25	9	8	17	16	7,5	69	36	21	65	20	8	34	285

Attention: bore d1 (H11 tolerance) could be produced by request, with 50 pieces minimum.

Dm = It's possible to increase the hole, by boring, until Dm (enlarge).

Version with black-oxide insert and H7 tolerance bore

Art.	D	H	d	c	m	h1	h3	A	B	d3	d4	dl	L	Dm	d1 H7	Q	g
D77980.TD..01PZB	80	34	29	25	9	8	17	16	7,5	69	36	21	65	20	A.R.	34	

Attention: replace the two places in the code .. with the hole diameter required - 50 pieces minimum.

Dm = It's possible to increase the hole, by boring, until Dm (enlarge). **A.R.** = By request

**D - CONTROL
HANDWHEELS**

ver. DUK.10-0113



BOTECA

D - 16

Presumable presence in the stock in %

(☹) 90% (😊) 40% (☺) 5% (☹)

www.boteco.it - © All right reserved - BOTECA®
Any unauthorized reproduction is strictly forbidden