

Material:

Reinforced polyamide.
Oils and greases resistant.

Surface:

Satin.

Colour:

Black (RAL 9011).

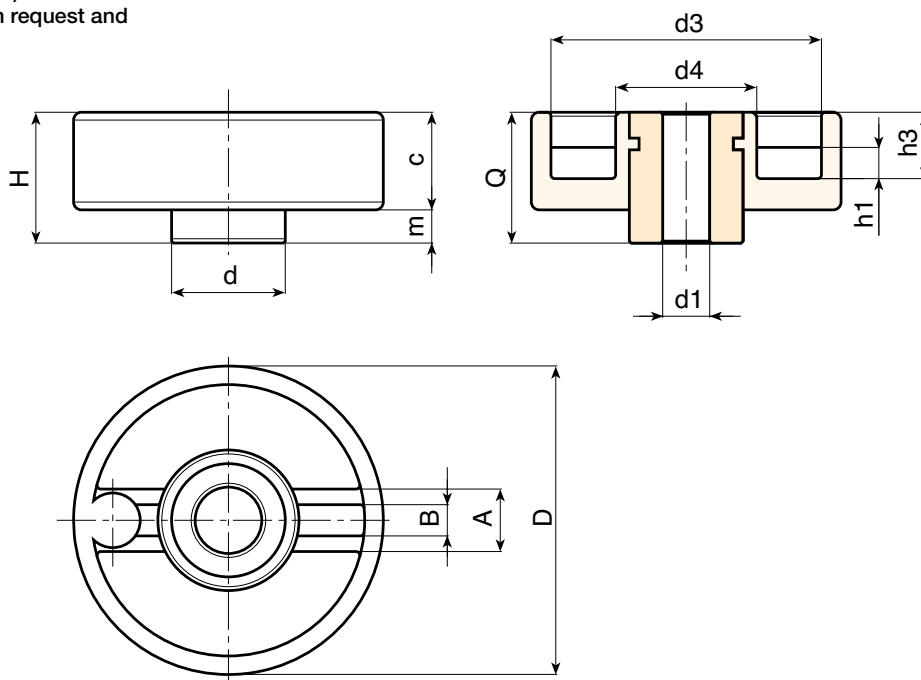
Main Insert:

Zinc plated steel insert with smooth through-hole (H11 tolerance).

For fixing system, or execution of keyway or square holes, please refer to the technical notes attached to the catalogue.

SPECIAL REQUEST:

- It's possible to supply the inserts with d1 bore by customer design, on request and for quantities.
- It's possible to supply the inserts in different material and treatment-finishes, on request and for quantities.
- It's possible to supply the products with colours (reduced range) as shown in the table at page D-19, on request and for quantities.



Version with zinc plated insert and H11 tolerance bore

Metric with Lims played in 2018 and 1917 tolerance 0%																	
	Art.	D	H	d	c	m	h1	h3	A	B	d3	d4	Dm	d1	H11	Q	g
	D78280.TD0801P	80	34	29	25	9	8	17	16	7.5	69	36	20	8	34	230	

Attention: bore d1 (H11 tolerance) could be produced by request, with 50 pieces minimum.

Dm = It's possible to increase the hole, by boring, until Dm (enlarge).

Version with black-oxide insert and H7 tolerance bore

Version with black oxide insert and H7 tolerance bore

	Art.	D	H	d	c	m	h1	h3	A	B	d3	d4	Dm	d1 H7	Q	g
	D78280.TD..01PZB	80	34	29	25	9	8	17	16	7,5	69	36	20	A.R.	34	

Attention: replace the two places in the code .. with the hole diameter required - 50 pieces minimum.

Dm = It's possible to increase the hole, by boring, until Dm (enlarge). **A.R.** = By request

Presumable presence in the stock in %

(☺) 90% (☺) 40% (☹) 5% (☹)

BOTECO® - © All right reserved - www.boteco.it
Any unauthorized reproduction is strictly forbidden



BOTECO