

# F186CAT

+135°  
-30°

PA6  
+G.F.

UL94  
HB

RoHS  
COMPLIANT

## SOLID STAR HANDWHEEL WITH RETAINING CHAIN AND FEMALE THREADED INSERT

### Materials:

Reinforced polyamide.  
Resistant to oils and greases.

### Surface finish:

Satin.

### Colour:

Black (RAL 9011).

### Inserts:

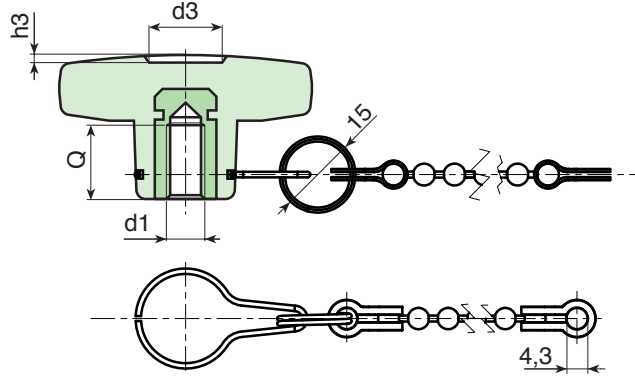
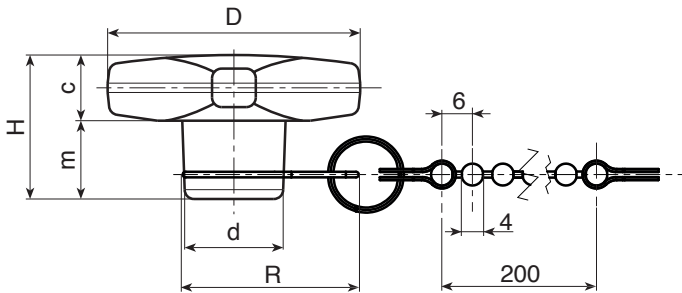
Brass insert with female threaded hole (thread tolerance 6H).

### Chain:

Black acetal (POM) chain. Harmonic stainless steel (Aisi 302) joints, retaining ring and hub hook.

### Special Requests:

- Upon request and for special quantities inserts can be supplied in different materials.
- Upon request the chain can be supplied with customised lengths.
- Upon request and for special quantities available in the colours indicated in the chart (attention: reduced range) [page 805].



Art.	D	H	d	R	c	m	d3	h3	d1 <sub>6H</sub>	Q	g
F18632.TM0401CAT	32	23	15	32	11	12	11	1.5	M4	7	14
F18632.TM0501CAT	32	23	15	32	11	12	11	1.5	M5	14	14.5
F18632.TM0601CAT	32	23	15	32	11	12	11	1.5	M6	10	15
F18640.TM0501CAT	40	24.5	16	33	12	12.5	13	1.5	M5	14	17
F18640.TM0601CAT	40	24.5	16	33	12	12.5	13	1.5	M6	16	18
F18640.TM0801CAT	40	24.5	16	33	12	12.5	13	1.5	M8	14	19
F18650.TM0601CAT	50	29	20	35	14	15	14	2	M6	16	28
F18650.TM0801CAT	50	29	20	35	14	15	14	2	M8	14	29
F18650.TM1001CAT	50	29	20	35	14	15	14	2	M10	14	30
F18660.TM0801CAT	60	34	24	38	15.5	18.5	18	2	M8	19	43
F18660.TM1001CAT	60	34	24	38	15.5	18.5	18	2	M10	21	46
F18660.TM1201CAT	60	34	24	38	15.5	18.5	18	2	M12	18	47