

G732



PA6
+GF

UL94
HB



4-LOBE HANDWHEEL WITH THREADED STUD

Material:

Reinforced polyamide. Oils and greases resistant.

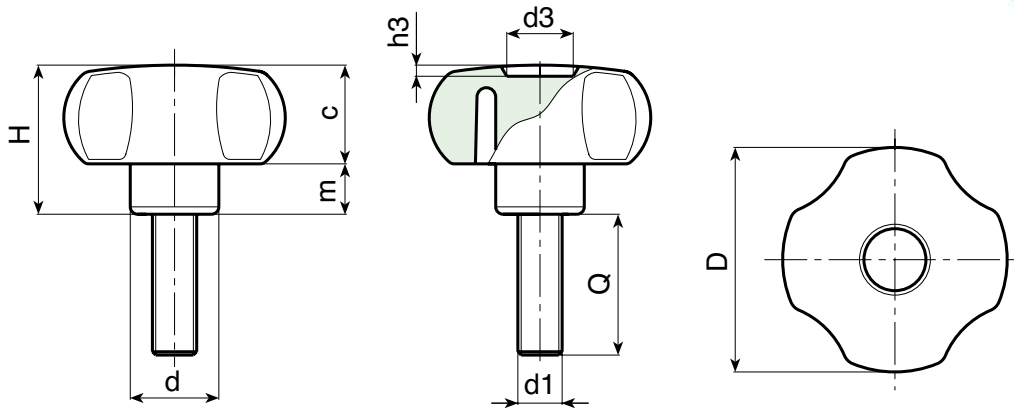
Surface: Satin.

Colour: Black (RAL 9011).

Main Insert: Zinc plated steel threaded stud (tolerance 6g).

SPECIAL REQUESTS:

- It is possible to supply inserts in different lengths or by special design, on request and for quantities.
- It is possible to supply inserts in different materials, on request and for quantities.
- It is possible to supply colours as shown in the table on page F-23, on request and for quantities.



art.	D	H	d	c	m	d3	h3	LM	d1	6H	Q	g
G73220.TM04X..01	21	14	11	8,5	5,5	8	1,5	50	M04	10-16-20-30	4-4,5-5-6	
G73220.TM05X..01	21	14	11	8,5	5,5	8	1,5	50	M05	10-16-20-30	6-6,5-7-8	
G73220.TM06X..01	21	14	11	8,5	5,5	8	1,5	50	M06	10-16-20-30-40	6,5-7,5-8-9,5-11	
G73225.TM04X..01	26	16	12	10	6	10	1,5	95	M08	10-16-20-30	6-6-7-8	
G73225.TM05X..01	26	16	12	10	6	10	1,5	95	M05	10-16-20-30-40	8-8,5-9-10-11	
G73225.TM06X..01	26	16	12	10	6	10	1,5	95	M06	10-16-20-30-40	10-11-13-15-16	
G73225.TM08X..01	26	16	12	10	6	10	1,5	90	M08	16-20-30-40	14-16-20-24	
G73230.TM05X..01	30	23	15	13,5	9,5	12	2	90	M05	10-16-20-30-40	12-13-13-14-15	
G73230.TM06X..01	30	23	15	13,5	9,5	12	2	90	M06	16-20-30-40-50	15-16-18-20-22	
G73230.TM08X..01	30	23	15	13,5	9,5	12	2	90	M08	16-20-30-40-50	20-22-25-28-31	
G73230.TM10X..01	30	23	15	13,5	9,5	12	2	90	M10	20-30-40-50-60	25-30-36-43-49	
G73240.TM06X..01	40,5	29,5	15,5	18,5	11	12	3	100	M06	16-20-30-40-50	24-26-28-30-32	
G73240.TM08X..01	40,5	29,5	15	18,5	11	12	3	100	M08	16-20-30-40-50	28-31-34-37-40	
G73240.TM10X..01	40,5	29,5	17,5	18,5	11	12	3	100	M10	16-20-30-40-50-60	35-38-43-48-53-59	
G73240.TM12X..01	40,5	29,5	21	18,5	11	12	3	100	M12	20-30-40	47-54-61	
G73250.TM06X..01	49	32	20,5	21,5	11	14,5	2,5	120	M06	16-20-30-40-50	42-43-45-47-49	
G73250.TM08X..01	49	32	20,5	21,5	11	14,5	2,5	120	M08	16-20-30-40-50-60	49-51-54-57-60-64	
G73250.TM10X..01	49	32	20,5	21,5	11	14,5	2,5	120	M10	16-20-30-40-50-60	55-58-63-68-72-77	
G73250.TM12X..01	49	32	20,5	21,5	11	14,5	2,5	120	M12	20-30-40-50-60	70-77-83-90-97	
G73260.TM08X..01	59	40	23	25	15	24	4	120	M08	16-20-30-40-50-60	73-76-79-81-85	
G73260.TM10X..01	59	40	23	25	15	24	4	120	M10	16-20-30-40-50-60	77-79-84-89-94-100	
G73260.TM12X..01	59	40	23	25	15	24	4	120	M12	20-30-40-50-60	91-97-104-111-119	
G73260.TM14X..01	59	40	23	25	15	24	4	120	M14	30-40-50	111-123-132	
G73280.TM10X..01	79	41	30	24	17	21	3	80	M10	20-30-40-50-60	100-105-110-115-120	
G73280.TM12X..01	79	41	30	24	17	21	3	80	M12	20-30-40-50-60	110-117-127-135-142	
G73280.TM14X..01	79	41	30	24	17	21	3	80	M14	20-30-40-50	120-131-145-182	
G73280.TM16X..01	79	41	30	24	17	21	3	80	M16	25-30-40-50	130-138-150-162	

LM = Maximum mouldable length.

It's possible to have different lengths, by customers requests. Minimum 100 pieces.

**G - LOCKING
HANDWHEELS**

ver. GUK.11-1113



BOTECO

G - 8

Presumable presence in the stock in %

(☹) 90% (☺) 40% (☹) 5% (☹)

www.boteco.it - © All right reserved - BOTECO

Any unauthorized reproduction is strictly forbidden