

# 4-LOBE HANDWHEEL WITH SMOOTH HOLE INSERT

## G733



**Material:**

Reinforced polyamide.  
Oils and greases resistant.

**Surface:**

Satin.

**Colour:**

Black (RAL 9011).

**Main Insert:**

(\*) Brass insert with smooth blind hole (H7 tolerance).

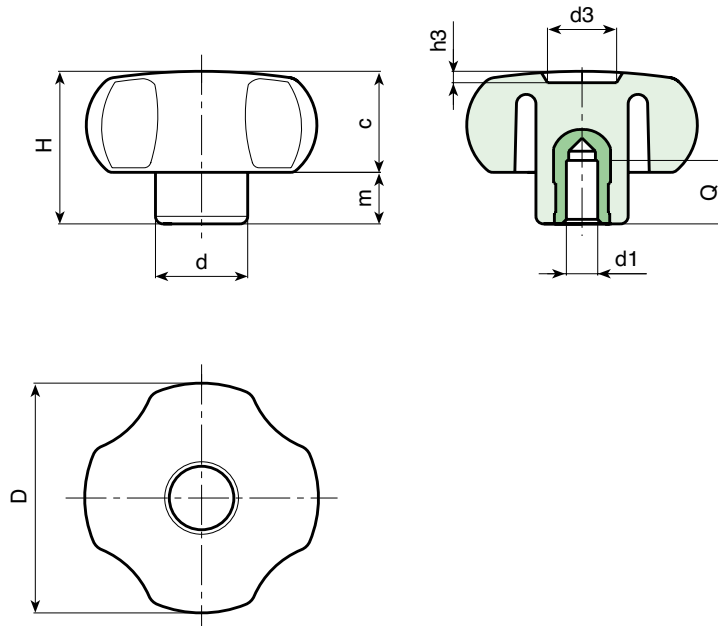
**ATTENTION: bore cannot be enlarged.**

Zinc plated steel insert with smooth blind hole (H11 tolerance).



**SPECIAL REQUEST:**

- It is possible to supply the inserts in different materials, on request and for quantities.
- It is possible to supply colours as shown in the table at pag. G-23, on request and for quantities.



art.	D	H	d	c	m	d3	h3	Dm	d1 H7	Q	g
G73330.TD0601	30	23	15	13,5	9,5	12	2	-	(*) 06	15	16
G73330.TD0801	30	23	15	13,5	9,5	12	2	-	(*) 08	15	17
G73340.TD0601	40,5	29,5	15,5	18,5	11	12	3	-	(*) 06	15	24
G73340.TD0801	40,5	29,5	15	18,5	11	12	3	-	(*) 08	15	28
G73340.TD1001	40,5	29,5	17,5	18,5	11	12	3	-	(*) 10	15	30
G73350.TD0501	49	32	20,5	21,5	11	14,5	2,5	12	(#) 05 H11	18	60
G73360.TD0501	59	40	23	25	15	24	4	12	(#) 05 H11	18	90
G73380.TD0501	79	41	30	24	17	21	3	18	(#) 05 H11	24	165

**Attention: (#) bore d1 (H11 tolerance) could be produced by request, with 200 pieces minimum.**

**Dm = It's possible to increase the hole, by boring, until Dm (enlarge).**

Presumable presence in the stock in %

(☺) 90% (☹) 40% (⊖) 5% (⊕)

BOTECO® - © All right reserved - www.boteco.it

Any unauthorized reproduction is strictly forbidden



**BOTECO**