

# CYLINDRICAL HANDWHEEL WITH SMOOTH HOLE INSERT

## G792



PA6  
+GF

UL94  
HB



### Material:

Reinforced polyamide.  
Oils and greases resistant.

### Surface:

Satin.

### Colour:

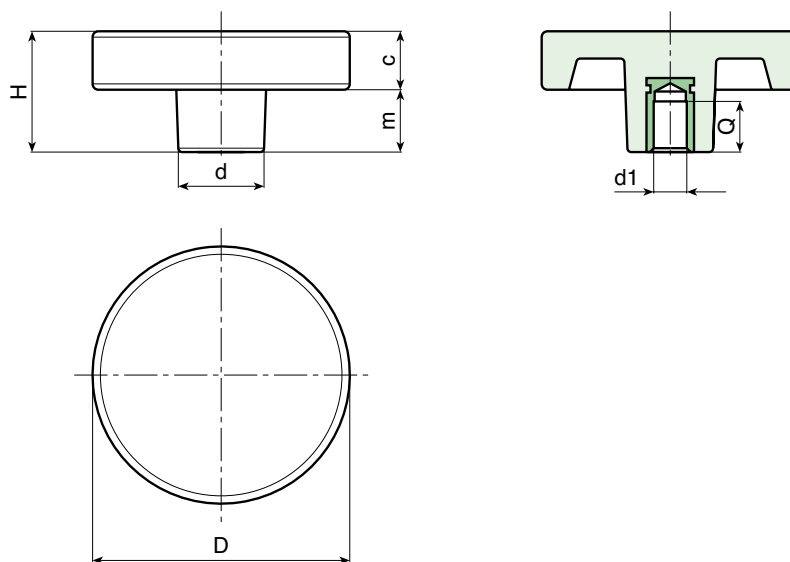
Black (RAL 9011).

### Main Insert:

Zinc plated steel insert with smooth through-hole  
(H11 tolerance).

### SPECIAL REQUEST:

- It's possible to supply the inserts with d1 bore by customer design, on request and for quantities.
- It's possible to supply the inserts in different material and treatment-finishes, on request and for quantities.
- It's possible to supply the products with colours as shown in the table at page G-23, on request and for quantities.



|   | art.                 | D         | H         | d         | c         | m         | Dm        | d1 H11    | Q         | g         |
|---|----------------------|-----------|-----------|-----------|-----------|-----------|-----------|-----------|-----------|-----------|
| ☹ | <b>G79250.TD0501</b> | <b>50</b> | <b>30</b> | <b>22</b> | <b>15</b> | <b>15</b> | <b>12</b> | <b>06</b> | <b>20</b> | <b>62</b> |
| ☹ | <b>G79266.TD0501</b> | <b>65</b> | <b>30</b> | <b>22</b> | <b>15</b> | <b>15</b> | <b>12</b> | <b>10</b> | <b>20</b> | <b>80</b> |

**Attention:** bore d1 (H11 tolerance) could be produced by request, with 200 pieces minimum.

**Dm** = It's possible to increase the hole, by boring, until Dm (enlarge).

Presumable presence in the stock in %

(☹) 90% (☺) 40% (☹) 5% (☹)

BOTECO® - © All right reserved - [www.boteco.it](http://www.boteco.it)  
Any unauthorized reproduction is strictly forbidden



**BOTECO**

G - 15

**G - LOCKING  
HANDWHEELS**

ver. GUK.11-1113