

# G795



PA6  
+GF

UL94  
HB



## KNOB WITH THREADED STUD

### Material:

Reinforced polyamide.

Oils and greases resistant.

### Surface:

Satin.

### Colour:

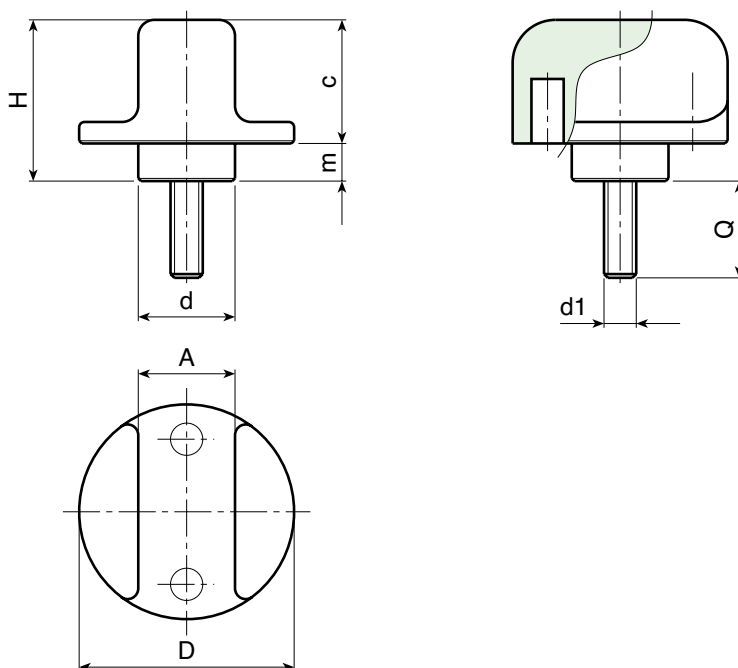
Black (RAL 9011).

### Main Insert:

Zinc plated steel threaded stud (tolerance 6g).

### SPECIAL REQUESTS:

- It is possible to supply inserts in different lengths or by special design, on request and for quantities.
- It is possible to supply inserts in different materials, on request and for quantities.
- It is possible to supply colours as shown in the table on page G-23, on request and for quantities.



	art.	D	H	d	A	c	m	LM	d1 6g	Q	g
	G79525.TM05X3001	25	20	12	10	15	5	40	M05	30	13,5
	G79525.TM06X4001	25	20	12	10	15	5	40	M06	40	15
	G79525.TM08X4001	25	20	12	10	15	5	40	M08	40	25
	G79540.TM08X4001	40	30	18	18	22	7	50	M08	40	40
	G79540.TM10X4001	40	30	18	18	22	7	50	M10	40	51
	G79540.TM12X4001	40	30	18	18	22	7	50	M12	40	67

LM = Maximum mouldable length.

It's possible to have different lengths, by customers requests. Minimum 200 pieces.

**G - LOCKING  
HANDWHEELS**

ver. GUK.11-1113



**BOTECA**

G - 18

Presumable presence in the stock in %

(☹) 90% (☺) 40% (☹) 5% (☹)

www.boteco.it - © All right reserved - BOTECA®  
Any unauthorized reproduction is strictly forbidden