

G797



PA6
+GF

UL94
HB



KNOB WITH THREADED STUD

Material:

Reinforced polyamide.

Oils and greases resistant.

Surface:

Satin.

Colour:

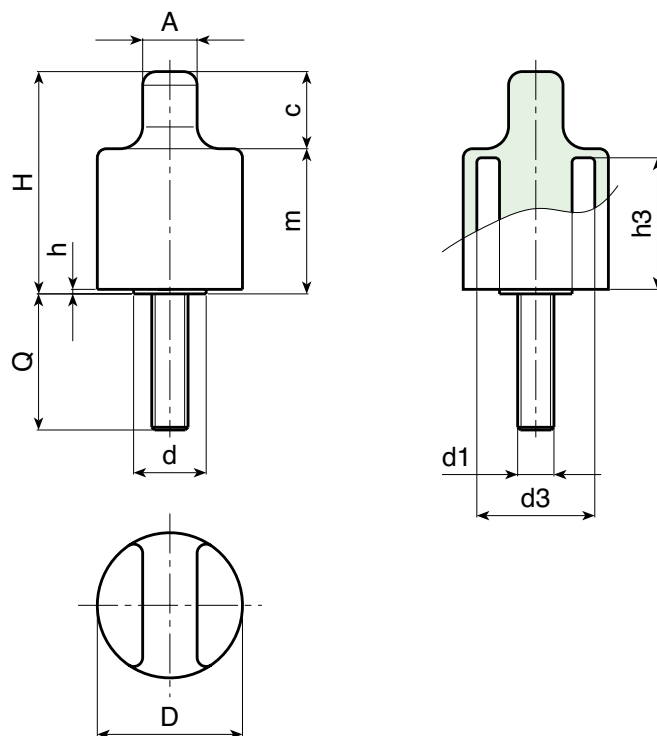
Black (RAL 9011).

Main Insert:

Zinc plated steel threaded stud (tolerance 6g).

SPECIAL REQUESTS:

- It is possible to supply inserts in different lengths or by special design, on request and for quantities.
- It is possible to supply inserts in different materials, on request and for quantities.
- It is possible to supply colours as shown in the table on page G-23, on request and for quantities.



	art.	D	H	d	A	c	m	h	h3	d3	LM	d1 6g	Q	⚖ g
☺	G79732.TM06X2001	32	49	16	12	15	34	1	29	25,5	60	M06	20	37
☺	G79732.TM08X2501	32	49	16	12	15	34	1	29	25,5	60	M08	25	43
☺	G79732.TM10X2001	32	49	16	12	15	34	1	29	25,5	60	M10	40	57
☺	G79732.TM12X2001	32	49	16	12	15	34	1	29	25,5	60	M12	20	59

LM = Maximum mouldable length.

It's possible to have different length, by customers requests. Minimum 200 pieces.

**G - LOCKING
HANDWHEELS**

ver. GUK.11-1113



BOTECA

G - 20

Presumable presence in the stock in %

(☺) 90% (☺) 40% (☹) 5% (☹)

www.boteco.it - © All right reserved - BOTECA®
Any unauthorized reproduction is strictly forbidden