

H759



PA6
+GF

UL94
HB



KNURLED HANDWHEEL WITH HUB AND THREADED STUD

Material:

Reinforced polyamide.
Oils and greases resistant.

Surface:

Satin.

Colour:

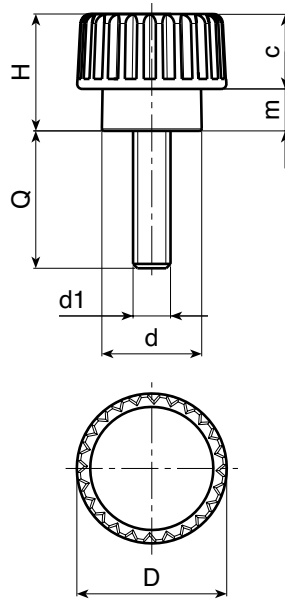
Black (RAL 9011).

Main Insert:

Zinc plated steel threaded stud (tolerance 6g).

SPECIAL REQUESTS:

- It is possible to supply inserts in different lengths or by special design, on request and for quantities.
- It is possible to supply inserts in different materials, on request and for quantities.
- It is possible to supply colours as shown in the table on page H-19, on request and for quantities.



art.	D	H	d	m	c	LM	d1 6g	Q	⚖ g
H75915.TM03X2401	15	12	10	4,5	7,5	70	M03	24	3,5
H75915.TM04X2001	15	12	10	4,5	7,5	70	M04	20	4
H75915.TM05X..01	15	12	10	4,5	7,5	70	M05	16-20-30	4,5-5,5-6,5
H75915.TM06X..01	15	12	10	4,5	7,5	70	M06	16-20-30	6-7,5-9

Enter the stud length choice in the two .. of the article code. Lengths by request with 250 pieces minimum quantity.

LM = Maximum mouldable length.

**H - KNURLED
HANDWHEELS**

ver. HUK.10-0113



BOTECA

H - 10

Presumable presence in the stock in %

(☺) 90% (☹) 40% (⊖) 5% (⊕)

www.boteco.it - © All right reserved - BOTECA®
Any unauthorized reproduction is strictly forbidden