

# I130



## MUSHROOM KNOB WITH CAP AND THREADED STUD

### Material:

Reinforced polyamide.  
Oils and greases resistant.

### Surface:

Satin.

### Colour:

Black (RAL 9011).

### Central Cap:

Grey polyamide (RAL 7035 cod. 13).

### Alternative Cap Colour:

Orange (RAL 2004 cod. 02)  
Blue (RAL 5015 cod. 07)  
Yellow (RAL 1021 cod. 10)  
Red (RAL 3000 cod. 16)  
Green (RAL 6024 cod. 17)  
Black (RAL 9011 cod. 01)

### Main Insert:

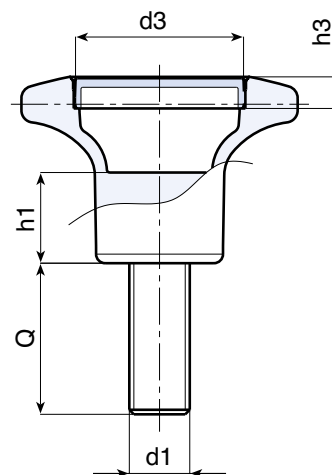
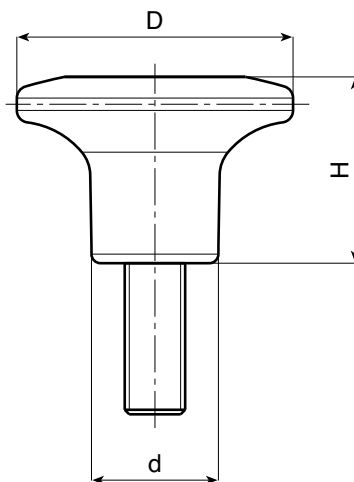
Zinc plated steel threaded stud (tolerance 6g).

### SPECIAL REQUESTS:

- It is possible to supply inserts in different lengths or by special design, on request and for quantities.
- It is possible to supply inserts in different materials, on request and for quantities.
- It is possible to supply colours as shown in the table on page I-23, on request and for quantities.

### PAD PRINTING SERVICE:

- Upon request and for special quantities caps can be supplied with customized pad printing.



	art.	D	H	d	h1	d3	h3	LM	d1 6g	Q	g
☹	I13045.TM08X..01	45	31	21	15	28	5	100	M08	A.R.	
☹	I13045.TM10X..01	45	31	21	15	28	5	100	M10	A.R.	
☹	I13045.TM12X..01	45	31	21	15	28	5	100	M12	A.R.	

Enter the stud length choice in the two .. of the article code. Lengths by request with 500 pieces minimum quantity.

LM = Maximum mouldable length.

A.R. = by request.

I  
HANDGRIPS

ver. IUK.15-0113

BOTECO  
EUROMODEL

I - 20

Availability of stock in %

(☹) 90% (😊) 40% (☺) 5% (☹)

www.boteco.it - © All right reserved - BOTECO®  
Any unauthorized reproduction is strictly forbidden