

STEEL AND STAINLESS STEEL DROP CATCH PLATE FOR ADJUSTABLE TOGGLE LATCH

J184



Material:

Drop drilled catch plate made of galvanised shear steel.

Surface:

Glossy.

ATTENTION: the toggle latch plate must be ordered separately.

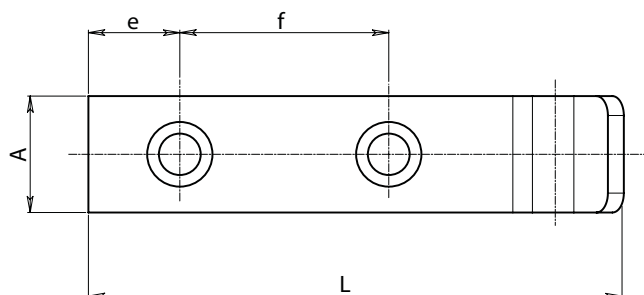
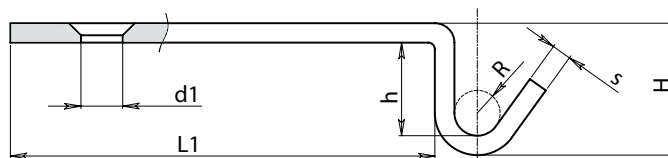
SPECIAL REQUESTS:

- None.

COMBINABLE TOGGLE LATCHES:

Article J184048 combinable with toggle latches: J180048-J182048

Article J184065 combinable with toggle latches: J182065-J182065-J180112-J182112.



Art.	H	L	L1	h	A	e	f	R	d1	s	g
J184048.FZ09	9	40	29	5	16	7	14	2,5	5,1	2	7
J184065.FZ21	21	82	65	16	18	14	32	3,5	6,5	3	31

Presumable presence in the stock in %

(📦) 90% (😊) 40% (😞) 5% (😡)

BOTECO® - © All right reserved - www.boteco.it
Any unauthorized reproduction is strictly forbidden

