

LOCKING BRACKET WITH THROUGH HOLE

J300



Material:

Reinforced polyamide.
Oils and greases resistant.

Surface:

Satin.

Colour:

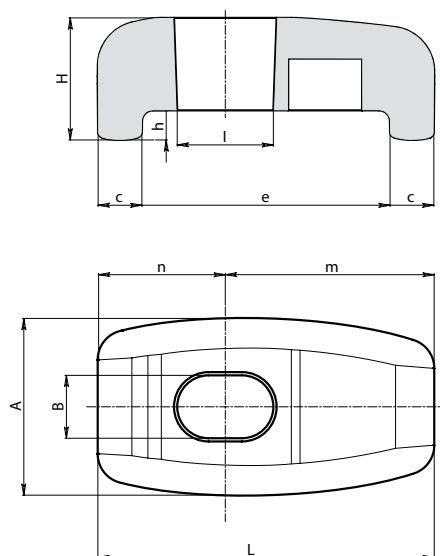
Black (RAL 9011).

Hole:

Smooth right through hole obtained by moulding the plastic.

SPECIAL REQUESTS:

- None.



J300+L271



The bracket must be used together with a threaded stud knob. A correct combination could be with 'T' handle art. L271. **Used together they act as a quick locking and release system** for panels on machines in general. They are particularly suitable for cladding panels used with large external chillers of conditioning systems.

	Art.	A	L	H	B	I	c	e	h	n	m	g
☺	J30046.TG08.501	24	45,5	16,5	8,5	13	6	33,5	4	17	2,5	15

Presumable presence in the stock in %

(☺) 90% (☺) 40% (☹) 5% (☹)

BOTECO® - © All right reserved - www.boteco.it
Any unauthorized reproduction is strictly forbidden



**J - LATCHING
SYSTEMS**