

L751 CIN



PA6
+GF

UL94
HB



WINGNUT WITH THREADED STUD

INOX

Material:

Reinforced polyamide.

Oils and greases resistant.

Surface:

Satin.

Colour:

Black (RAL 9011).

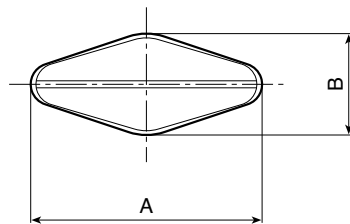
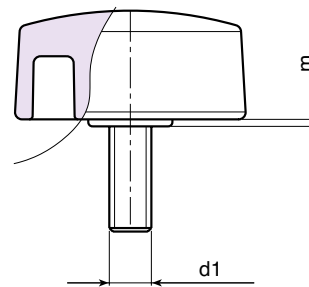
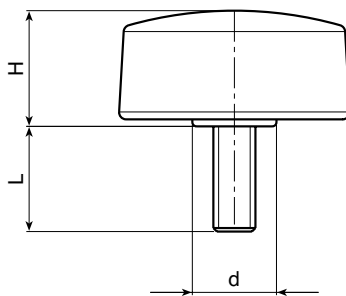
Main Insert:

Stainless steel threaded stud (AISI 303).

(tolerance 6g).

SPECIAL REQUESTS:

- It is possible to supply inserts in different lengths or by special design, on request and for quantities.
- It is possible to supply colours as shown in the table on page L-27, on request and for quantities.



	Art.	A	B	H	m	d	LM	d1 6g	Q	⚖ g
☹	L75132.TM05X..01CIN	33	15	16,5	1	12	60	M05	A.R.	-
😊	L75132.TM06X..01CIN	33	15	16,5	1	12	60	M06	11-30	11-13
😊	L75132.TM08X1601CIN	33	15	16,5	1	12	60	M08	16	15
☹	L75148.TM06X..01CIN	48	15	16	1	12,5	70	M06	A.R.	-
☹	L75148.TM08X..01CIN	48	15	16	1	12,5	70	M08	A.R.	-

Enter the stud length choice in the two .. of the article code. Lengths by request with 250 pieces minimum quantity.

LM = Maximum mouldable length.

A.R. = by request.

**L - WINGNUTS
AND T-HANDLES**

ver. LUK.15-0113



BOTECA

L - 20

Presumable presence in the stock in %

(☹) 90% (😊) 40% (☹) 5% (☹)

www.boteco.it - © All right reserved - BOTECA®

Any unauthorized reproduction is strictly forbidden