



P800 Version - Floor-anchor mounting feet with revolving threaded stud with self-locking nut

	Art.	D	H	I	H1	h	A	s	d2	d3	C	d1	Q	g	F1 (N)
⊗	P800080.TM12X..01	80	20	54	28	16	20	8	9	M08	10	M12	50-70-90-110-130-150-170-190	*	13000
⊗	P800080.TM14X..01	80	20	54	28	16	20	8	9	M08	12	M14	50-70-90-110-130-150-170-190	*	13000
⊗	P800080.TM16X..01	80	20	54	28	16	20	8	9	M08	13	M16	50-70-90-110-130-150-170-190	*	13000
⊗	P800080.TM20X..01	80	20	54	28	16	20	8	9	M08	19	M20	50-70-90-110-130-150-170-190	*	13000
⊗	P800105.TM12X..01	105	22	74	30	18,5	21	8	11	M10	10	M12	50-70-90-110-130-150-170-190	*	15000
⊗	P800105.TM14X..01	105	22	74	30	18,5	21	8	11	M10	12	M14	50-70-90-110-130-150-170-190	*	15000
⊗	P800105.TM16X..01	105	22	74	30	18,5	21	8	11	M10	13	M16	50-70-90-110-130-150-170-190	*	15000
⊗	P800105.TM20X..01	105	22	74	30	18,5	21	8	11	M10	17	M20	50-70-90-110-130-150-170-190	*	15000
⊗	P800105.TM24X..01	105	22	74	30	18,5	21	8	11	M10	19	M24	50-70-90-110-130-150-170-190	*	15000
⊗	P800105.TM30X..01	105	22	74	30	18,5	21	8	11	M10	24	M30	50-70-90-110-130-150-170-190	*	15000
⊗	P800130.TM16X..01	130	24	99	32	20	21	8	13	M10	13	M16	50-70-90-110-130-150-170-190	*	17000
⊗	P800130.TM20X..01	130	24	99	32	20	21	8	13	M10	17	M20	50-70-90-110-130-150-170-190	*	17000
⊗	P800130.TM24X..01	130	24	99	32	20	21	8	13	M10	19	M24	50-70-90-110-130-150-170-190	*	17000
⊗	P800130.TM30X..01	130	24	99	32	20	21	8	13	M10	24	M30	50-70-90-110-130-150-170-190	*	17000

Enter the stud length in the two . . of the code number. It's possible to have different lengths, by customers requests. Minimum 100 pieces.

* = See table pag. 29

P801 Version - Floor-anchor mounting feet with revolving threaded stud with circlip fastener

	Art.	D	H	I	H1	h	A	s	d2	d3	C	d1	Q	g	F1 (N)
⊗	P801080.TM12X..01	80	20	54	28	16	20	8	9	8	10	M12	50-70-90-110-130-150-170-190	*	13000
⊗	P801080.TM14X..01	80	20	54	28	16	20	8	9	8	12	M14	50-70-90-110-130-150-170-190	*	13000
⊗	P801080.TM16X..01	80	20	54	28	16	20	8	9	8	13	M16	50-70-90-110-130-150-170-190	*	13000
⊗	P801080.TM20X..01	80	20	54	28	16	20	8	9	8	19	M20	50-70-90-110-130-150-170-190	*	13000
⊗	P801105.TM12X..01	105	22	74	30	18,5	21	8	11	10	10	M12	50-70-90-110-130-150-170-190	*	15000
⊗	P801105.TM14X..01	105	22	74	30	18,5	21	8	11	10	12	M14	50-70-90-110-130-150-170-190	*	15000
⊗	P801105.TM16X..01	105	22	74	30	18,5	21	8	11	10	13	M16	50-70-90-110-130-150-170-190	*	15000
⊗	P801105.TM20X..01	105	22	74	30	18,5	21	8	11	10	17	M20	50-70-90-110-130-150-170-190	*	15000
⊗	P801105.TM24X..01	105	22	74	30	18,5	21	8	11	10	19	M24	50-70-90-110-130-150-170-190	*	15000
⊗	P801105.TM30X..01	105	22	74	30	18,5	21	8	11	10	24	M30	50-70-90-110-130-150-170-190	*	15000
⊗	P801130.TM16X..01	130	24	99	32	20	21	8	13	10	13	M16	50-70-90-110-130-150-170-190	*	17000
⊗	P801130.TM20X..01	130	24	99	32	20	21	8	13	10	17	M20	50-70-90-110-130-150-170-190	*	17000
⊗	P801130.TM24X..01	130	24	99	32	20	21	8	13	10	19	M24	50-70-90-110-130-150-170-190	*	17000
⊗	P801130.TM30X..01	130	24	99	32	20	21	8	13	10	24	M30	50-70-90-110-130-150-170-190	*	17000

Enter the stud length in the two . . of the code number. It's possible to have different lengths, by customers requests. Minimum 100 pieces.

* = See table pag. 29

P800 - P801



Material:

Reinforced polyamide.
Oils and greases resistant.

Surface:

Satin.

Colour:

Black (RAL 9011).

Inserts:

Version P800:

(2) Stainless steel washer AISI 304.

(1) Stainless steel self-locking nut UNI 7474 AISI 304.

Zinc plated steel turned threaded stud, with threaded fastening end.

Version P801:

(2) Stainless steel washer AISI 304.

(1) Black-oxide treated circlip UNI 7435.

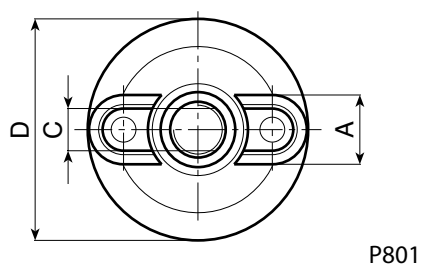
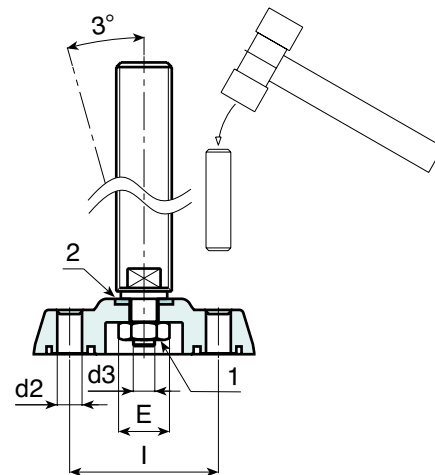
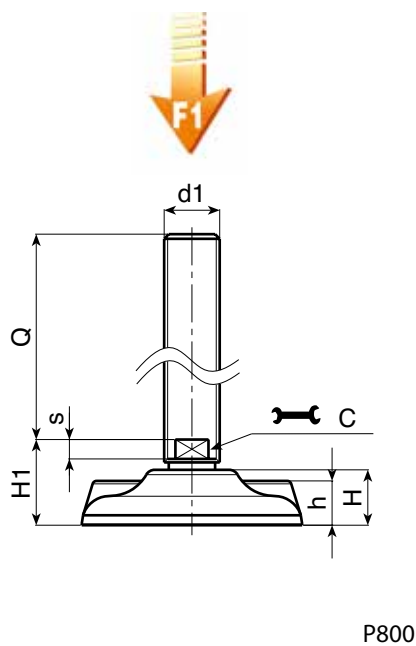
Zinc plated steel turned threaded stud, with end groove for circlip lodging.

Anchoring to the Floor:

The holes in the foot for anchoring the mount to the floor, are supplied closed. To open them simply break the plastic membrane (see drawing).

SPECIAL REQUESTS:

- It is possible to supply the inserts with different lengths, on request and for quantities.
- Upon request and for special quantities the foot can be supplied in Orange (RAL 2004).



Presumable presence in the stock in %

(☺) 90% (☹) 40% (☹) 5% (☹)

BOTECO® - © All right reserved - www.boteco.it

Any unauthorized reproduction is strictly forbidden



BOTECO