

P900

P905 - P906 - P907
P900CIN - P905CIN

MOUNTING FOOT WITH STEEL AND STAINLESS STEEL STUD

P900 Version - Mounting foot with stud type A - R12,5

	Art.	D	H	H1	E	s	R	d1	Q	g	F1 (N)
😊	P90040.TM08X..01	40	17	23	⊙ 13	5	12,4	M08	45-70	40-47	10.000
😊	P90040.TM10X..01	40	17	23	⊙ 13	5	12,4	M10	45-70-100	48-60-75	10.000
😊	P90040.TM12X..01	40	17	23	⊙ 13	5	12,4	M12	45-70-100	58-75-97	10.000
😊	P90050.TM08X..01	50	18	24	⊙ 13	5	12,4	M08	45-70	46-53	10.000
😊	P90050.TM10X..01	50	18	24	⊙ 13	5	12,4	M10	45-70-100	54-63-77	10.000
😊	P90050.TM12X..01	50	18	24	⊙ 13	5	12,4	M12	45-70-100	64-78-99	10.000
😊	P90060.TM08X..01	60	20	26	⊙ 13	5	12,4	M08	45-70	58-66	10.000
😊	P90060.TM10X..01	60	20	26	⊙ 13	5	12,4	M10	45-70-100	68-80-95	10.000
😊	P90060.TM12X..01	60	20	26	⊙ 13	5	12,4	M12	45-70-100	78-96-117	10.000

Enter the stud length in the two . . of the code number.

P905 Version - Mounting foot with stud type A - R15

	Art.	D	H	H1	E	s	R	d1	Q	g	F1 (N)
	P90560.TM12X..01	60	20	26	⊙ 16	6,5	15	M12	50-70-90-110	pag.29	13.000
	P90560.TM14X..01	60	20	26	⊙ 16	6,5	15	M14	50-70-90-110-130-150	pag.29	13.000
	P90560.TM16X..01	60	20	26	⊙ 16	6,5	15	M16	50-70-90-110-130-150-170-190	pag.29	13.000

Enter the stud length in the two . . of the code number. It's possible to have different lengths, by customers requests. Minimum 100 pieces.

P906 Version - Mounting foot with stud type B - R12,5

	Art.	D	H	H1	E	s	R	d1	Q	g	F1 (N)
	P90660.TM16X..01	60	20	26	⊙ 13	7	12,4	M16	50-70-90-110-130-150-170	pag.30	10.000

Enter the stud length in the two . . of the code number. It's possible to have different lengths, by customers requests. Minimum 100 pieces.

P907 Version - Mounting foot with stud type B - R15

	Art.	D	H	H1	E	s	R	d1	Q	g	F1 (N)
	P90760.TM20X..01	60	20	26	⊙ 16	7	15	M20	50-70-90-110-130-150-170-190-210	pag.30	13.000

Enter the stud length in the two . . of the code number. It's possible to have different lengths, by customers requests. Minimum 100 pieces.

P900 CIN Version - Mounting foot with stud type A - R12,5 in stainless steel

	Art.	D	H	H1	E	s	R	d1	Q	g	F1 (N)
☹	P90040.TM08X..01CIN	40	17	23	⊙ 13	5	12,4	M08	45-70	40-47	10.000
☹	P90040.TM10X..01CIN	40	17	23	⊙ 13	5	12,4	M10	45-70	48-60	10.000
☹	P90040.TM12X..01CIN	40	17	23	⊙ 13	5	12,4	M12	45-70-100	58-75-99	10.000
☹	P90050.TM08X..01CIN	50	18	24	⊙ 13	5	12,4	M08	45-70	46-53	10.000
☹	P90050.TM10X..01CIN	50	18	24	⊙ 13	5	12,4	M10	45-70	54-63	10.000
☹	P90050.TM12X..01CIN	50	18	24	⊙ 13	5	12,4	M12	45-70-100	64-78-102	10.000
☹	P90060.TM08X..01CIN	60	20	26	⊙ 13	5	12,4	M08	45-70	58-66	10.000
☹	P90060.TM10X..01CIN	60	20	26	⊙ 13	5	12,4	M10	45-70	68-80	10.000
☹	P90060.TM12X..01CIN	60	20	26	⊙ 13	5	12,4	M12	45-70-100	78-96-120	10.000

Enter the stud length in the two . . of the code number. It's possible to have different lengths, by customers requests. Minimum 100 pieces.

P905 CIN Version - Mounting foot with stud type A - R15 in stainless steel

	Art.	D	H	H1	E	s	R	d1	Q	g	F1 (N)
☹	P90560.TM12X..01CIN	60	20	26	⊙ 17	6,5	15	M12	50-70-90	pag.30	13.000
☹	P90560.TM14X..01CIN	60	20	26	⊙ 17	6,5	15	M14	50-70-90-110-130	pag.30	13.000
☹	P90560.TM16X..01CIN	60	20	26	⊙ 17	6,5	15	M16	50-70-90-110-130-150-170	pag.30	13.000

Enter the stud length in the two . . of the code number. It's possible to have different lengths, by customers requests. Minimum 100 pieces.

P900



Material:

Reinforced polyamide.
Oils and greases resistant.

Surface:

Satin.

Colour:

Black (RAL 9011).

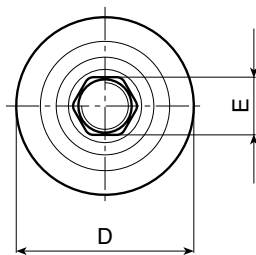
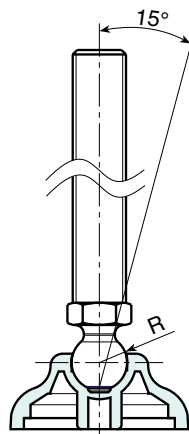
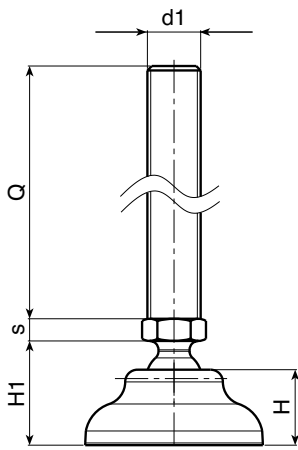
Inserts:

Version P900 - P905 - P906 - P907: Zinc plated steel articulated, threaded stud.

Version P900 CIN - P905 CIN: Threaded and articulated stainless steel stud (AISI 303).

SPECIAL REQUESTS:

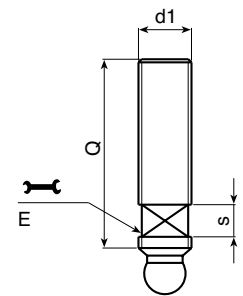
- It is possible to supply the inserts with different lengths, on request and for quantities.
- Upon request and for special quantities the foot can be supplied in Orange (RAL 2004).



Art. P900 CIN



Stud type A



Stud type B

Presumable presence in the stock in %

(☺) 90% (☹) 40% (⊖) 5% (⊕)

BOTECO® - © All right reserved - www.boteco.it
Any unauthorized reproduction is strictly forbidden



BOTECO