

Q262

PLASTIC KNURLED WASHER



PA6
+GF

UL94
HB



Material:

Reinforced polyamide.
Oils and greases resistant.

Surface:

Satin.

Colour:

Black (RAL 9011).

Hole:

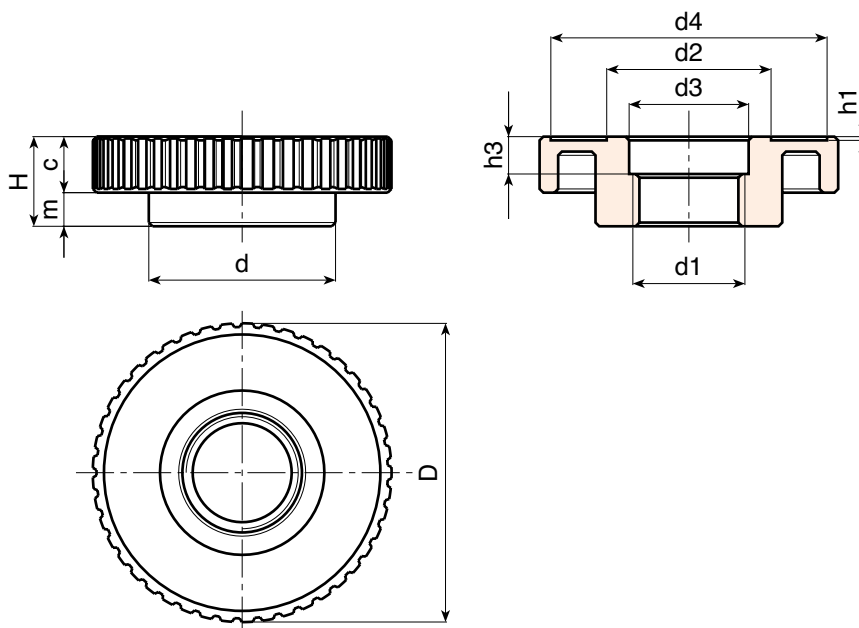
Female threaded right through hole obtained by moulding the plastic. (tolerance in not applicable).

SPECIAL REQUEST:

- It is possible to supply colours as shown in the table at pag. I-23, on request and for quantities.

RICHIESTE SPECIALI:

- It's possible to supply the d1 bore by customer design, on request and for quantities.



	art.	D	H	d	c	m	h1	h3	d2	d3	d4	d1	g
	Q26280.TB3001P	81	24	50	14,5	9,5	1	10	43,5	32	74	M30x1,5	65

Q - WASHERS

ver. QUK.10-0113



BOTECO

Presumable presence in the stock in %

90% 40% 5%

www.boteco.it - Reproduction prohibited - © BOTECO ®