

# PLASTIC KNURLED WASHER

## Q263



### Material:

Reinforced polyamide.  
Oils and greases resistant.

### Surface:

Satin.

### Colour:

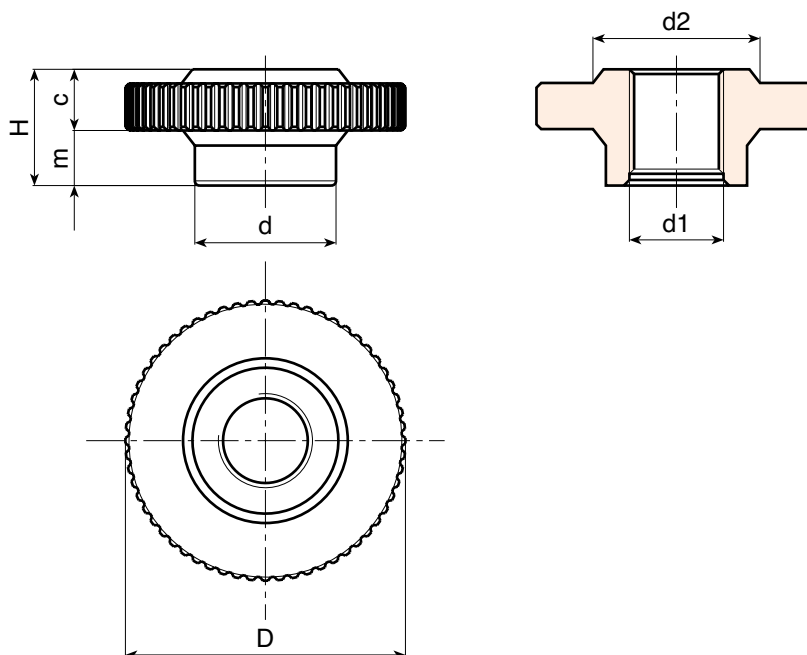
Black (RAL 9011).

### Hole:

Female threaded right through hole obtained by moulding the plastic. (tolerance in not applicable).

### SPECIAL REQUEST:

- It's possible to supply the d1 bore by customer design, on request and for quantities.



	art.	D	H	d	c	m	d2	d1	g
☺	Q26360.TM2001P	60	25	30	12	13	35	M20	38
☺	Q26360.TM2401P	60	25	30	12	13	35	M24	35

Presumable presence in the stock in %

(☺) 90% (☹) 40% (☹) 5% (☹) |

© BOTECO® - Reproduction prohibited - [www.boteco.it](http://www.boteco.it)



BOTECO

Q - WASHERS