

# R102

**NEW**



## POLYAMIDE MONOLITHIC WHEEL WITH ROUND STEEL SWIVEL SUPPORT AND SMOOTH THROUGH HOLE WITH BRAKE

### Materials:

#### Wheel body (1):

Polyamide. Resistant to oils and greases.

#### Tread (2):

Polyamide. Resistant to oils and greases.

### Surface finish:

Smooth.

### Colour:

(1-2) Natural white.

(3-4-5-6) Galvanised blue.

### Wheel rotation (4):

The hole for the pivot pin is formed by plastic moulding. A galvanised steel tube is positioned between the stud and the hole for protection.

### Bracket (3):

Steel fork (DD13), with integrated brake.

### Rotating assembly (5):

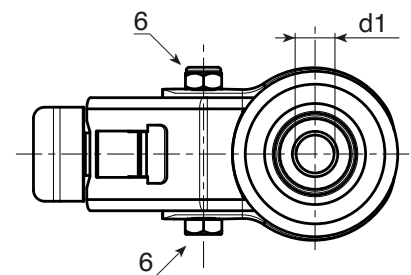
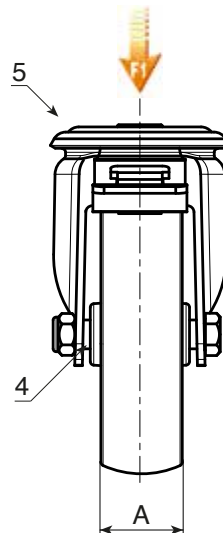
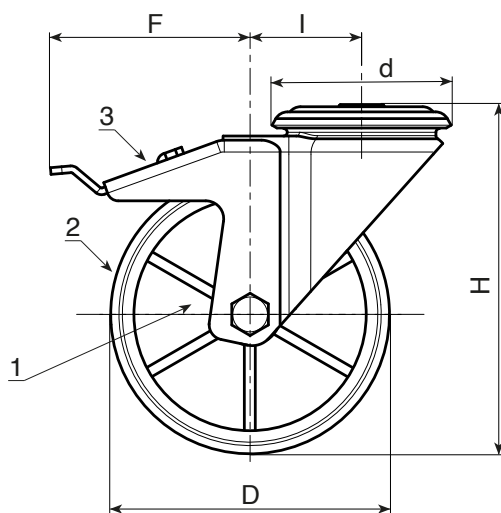
Steel rotating assembly with double ball race and smooth fixing hole, (hole tolerance H7).

### Wheel fastening (6):

Steel hex head screw, coupled with a steel nut.

### Special requests:

- Upon request and for a minimum of 20 pieces, the wheel can be supplied with a needle roller cage, (replace code no. R102 with code no. R132).



art.	D	A	H	I	d	F	d1H7	g	F1 (Kg)
R102080.T30D12	80	30	108	32	64	110	12	531	100
R102100.T30D12	100	30	127	32	64	110	12	512	130
R102125.T39D12	125	39	155	32	64	113	12	802	130
R102150.T40D12	150	40	184	35	65	115	12	-	140
R102175.T45D16	175	45	228	48	95	150	16	-	270
R102200.T50D16	200	50	240	48	95	150	16	2256	270

# R102CIN NEW



## POLYAMIDE MONOLITHIC WHEEL WITH ROUND STAINLESS STEEL SWIVEL SUPPORT AND SMOOTH THROUGH HOLE WITH BRAKE

INOX

### Materials:

#### Wheel body (1):

Polyamide. Resistant to oils and greases.

#### Tread (2):

Polyamide. Resistant to oils and greases.

### Surface finish:

Smooth.

### Colour:

(1-2) Natural white.

(3-4-5-6) Natural stainless steel.

### Wheel rotation (4):

The hole for the pivot pin is formed by plastic moulding. A stainless steel (Aisi 304) tube is positioned between the stud and the hole for protection.

### Bracket (3):

Stainless steel (Aisi 304) fork, with integrated brake.

### Rotating assembly (5):

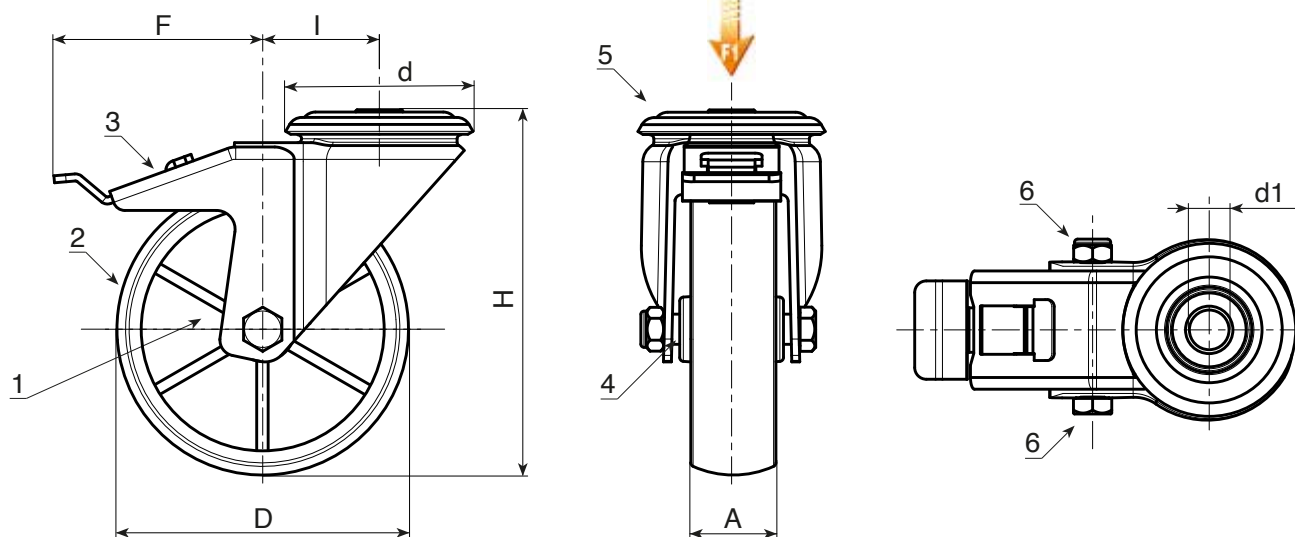
Stainless steel (Aisi 304) rotating assembly with double stainless steel (Aisi 420) ball race and smooth fixing hole, (hole tolerance H7).

### Wheel fastening (6):

Stainless steel (Aisi 304) hex head bolt, coupled with a stainless steel (Aisi 304) nut.

### Special requests:

- Upon request and for a minimum of 20 pieces, the wheel can be supplied with a needle roller cage, (replace code no. R102CIN with code no. R132CIN).



INOX

art.	D	A	H	I	d	F	d1H7	g	F1 (Kg)
● R102080.T30D12CIN	80	30	108	32	64	110	12	451	100
● R102100.T30D12CIN	100	30	127	32	64	110	12	706	130
● R102125.T39D12CIN	125	39	155	32	64	113	12	776	130
● R102150.T40D12CIN	150	40	184	35	65	115	12	-	140
● R102175.T45D16CIN	175	45	228	48	95	150	16	-	300
● R102200.T50D16CIN	200	50	240	48	95	150	16	-	300