

R301

NEW



SHEET METAL RIM / RUBBER WHEEL WITH ROUND STEEL SWIVEL SUPPORT AND SMOOTH THROUGH HOLE

Materials:

Wheel body:

Two stamped sheet metal disks (steel DD13) riveted together to create a single body.

Tread:

Natural rubber trapezoidal tread. Hardness 85 ± 4 Shore A.

Surface finish:

Smooth.

Colour:

(2) Black (RAL 9011).

(1-3-4-5-6) Galvanised blue.

Wheel rotation:

The hole for the pivot pin is stamped in sheet metal. A black polyamide insert is positioned between the pin and the hole for protection.

Bracket (3):

Steel fork (DD13).

Rotating assembly (5):

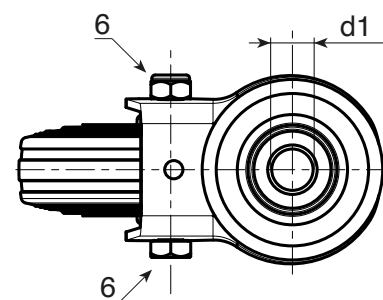
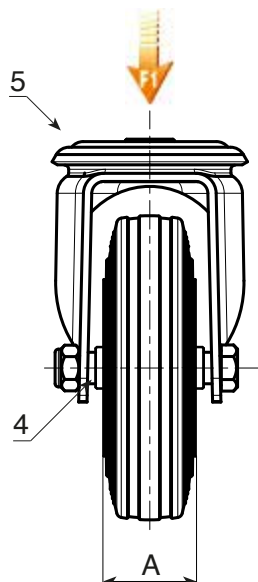
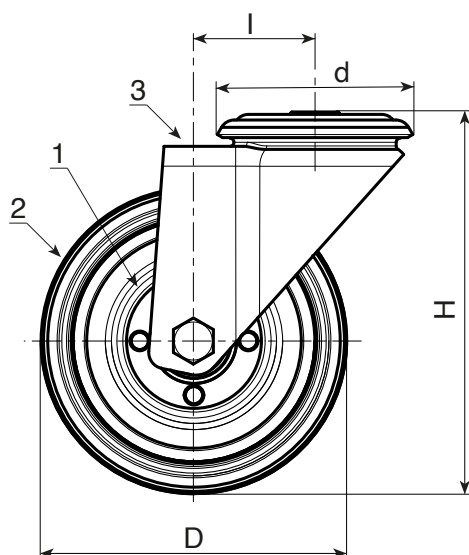
Steel rotating assembly with double ball race and smooth fixing hole, (hole tolerance H7).

Wheel fastening (6):

Steel hex head screw, coupled with a steel nut.

Special requests:

- Upon request and for a minimum of 20 pieces, the wheel can be supplied with a needle roller cage, (replace code no. R301 with code no. R331).



art.	D	A	H	l	d	d1H7	g	F1 (Kg)
R301080.T25D12	80	25	108	32	64	12	550	50
R301100.T30D12	100	30	127	32	64	12	672	70
R301125.T37D12	125	37.5	155	32	64	12	741	100
R301150.T37D12	150	37.5	183	35	65	12	-	140
R301180.T45D16	180	45	230	48	95	16	-	180
R301200.T50D16	200	50	240	48	95	16	2919	200