

# T LEVER WITH MOVABLE HANDLE AND THREADED BORE

## W700



C40

UL94  
HB



### Material:

Steel with resistance class 5.8.

### Surface:

Low roughness turned surface.

### Colour:

Black-oxide ( surface treatment).

### Inserts:

(1) Half-moon shaped ring on black-oxide treated harmonic steel (UNI 7434 type H).

(2) Zinc-plated steel spring.

(3) 7/32 zinc-plated steel ball.

### Handle:

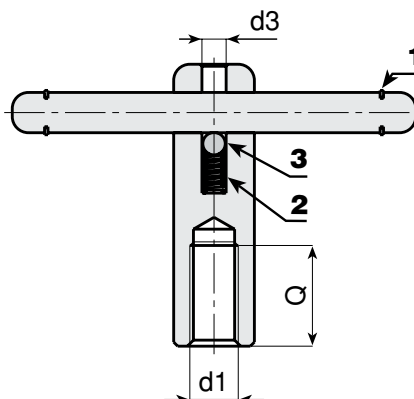
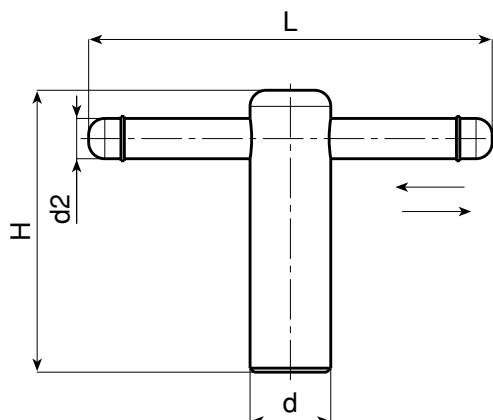
Movable handle locked at stroke end by ring.

### Hole:

Female threaded blind hole with tolerance class 6H.

### SPECIAL REQUESTS:

- It's possible to supply the levers with customised hole d1, on request and for quantities.
- It's possible to supply the levers with different surface treatments, on request and for quantities.



Art.	d	L	H	d2	d3	d1 6H	Q	g
W700085.VM10	18	85	62	8	6	M10	25	143
W700105.VM12	20	105	72	10	6	M12	30	207
W700125.VM16	24	125	87	12	6	M16	40	328
W700145.VM20	30	145	97	16	6	M20	45	570

Presumable presence in the stock in %

(☺) 90% (☹) 40% (☹) 5% (☹)

BOTECO® - © All right reserved - [www.boteco.it](http://www.boteco.it)

Any unauthorized reproduction is strictly forbidden

