

# W910

## STEEL INDEXING PLUNGER WITH LONG NOSE PIN



### Materials:

#### W910:

- (3) Galvanised steel spring.
- (2) Threaded high-resistance steel hexagon ring nut.
- (1) Hardened high resistance steel plunger pin.

#### W910CIN:

- (3) Stainless steel spring (Aisi 301).
- (2) Threaded stainless steel hexagon ring nut (Aisi 303).
- (1) Stainless steel plunger pin (Aisi 303).

### Surface finish:

Smooth.

### Colour:

W910: Black-oxide treated.

W910CIN: Natural.

### ATTENTION:

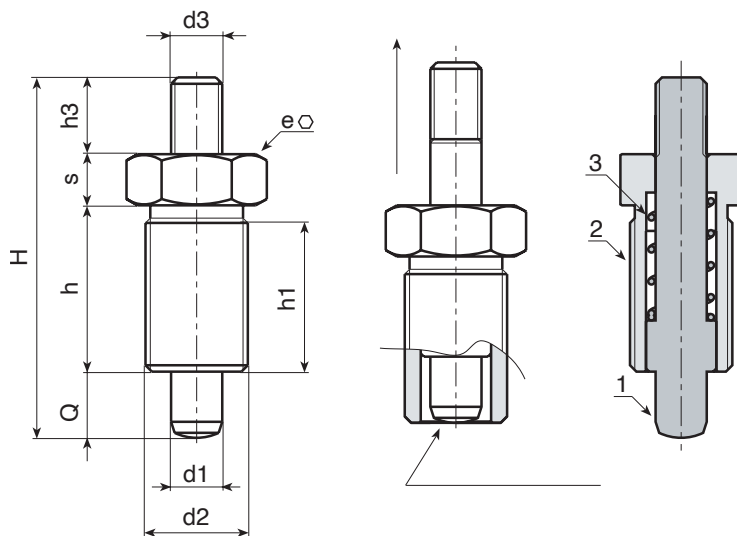
> We recommend an H7 tolerance for the plunger stem bore.

### Special Requests:

- None.

### Note:

This plunger version can be coupled with any hanwheel with threaded insert, to be ordered separately (see additional pictures).



### Version W910 - black-oxide treated steel

Art.	H	h	h1	d2	d3	h3	e	s	d1 -0,02 -0,04	Q	g
W910010.Q05X08	36	17	15	M10x1	M04	6	12	5	5	8	13
W910012.Q06X09	45	20	18	M12x1,5	M05	10	14	6	6	9	22
W910016.Q08X12	58	26	24	M16x1,5	M08	12	19	8	8	12	54
W910016.Q08X12	58	26	24	M16x1,5	M08	12	19	8	10	12	55
W910020.Q12X15	70	33	31	M20x1,5	M10	12	22	10	12	15	104

### Version W910 CIN - stainless steel (Aisi 303)

INOX

Art.	H	h	h1	d2	d3	h3	e	s	d1 -0,02 -0,04	Q	g
W910010.I05X08CIN	36	17	15	M10x1	M04	6	12	5	5	8	13
W910012.I06X09CIN	45	20	18	M12x1,5	M05	10	14	6	6	9	22
W910016.I08X12CIN	58	26	24	M16x1,5	M08	12	19	8	8	12	54
W910016.I08X12CIN	58	26	24	M16x1,5	M08	12	19	8	10	12	55
W910020.I12X15CIN	70	33	31	M20x1,5	M10	12	22	10	12	15	104

# W911



C40

Aisi 303



## STEEL INDEXING PLUNGER WITH LONG NOSE PIN AND LOCK NUT

### Materials:

#### W911:

- (3) Galvanised steel spring.
- (2) Threaded high-resistance steel hexagon ring nut.
- (1) Hardened high resistance steel plunger pin.
- (4) Threaded steel lock nut (UNI 5589).

#### W911CIN:

- (3) Stainless steel spring (Aisi 301).
- (2) Threaded stainless steel hexagon ring nut (Aisi 303).
- (1) Stainless steel plunger pin (Aisi 303).
- (4) Threaded stainless steel lock nut (Aisi 304) (UNI 5589).

### Surface finish:

Smooth.

### Colour:

W911: Black-oxide treated.

W911CIN: Natural.

### ATTENTION:

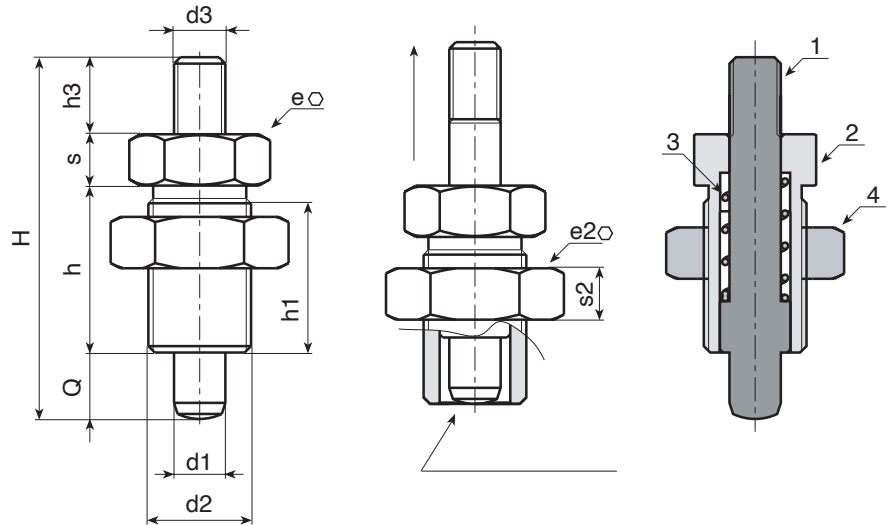
- > We recommend an H7 tolerance for the plunger stem bore.
- > The nut is supplied assembled.

### Special Requests:

- On request the nut can be supplied disassembled.

### Note:

This plunger version can be coupled with any hanwheel with threaded insert, to be ordered separately (see additional pictures).



### Version W911 - black-oxide treated steel

🛒	Art.	H	h	h1	d2	d3	h3	e	s	e2	s2	d1 -0,02 -0,04	Q	📦
●	W911010.Q05X08	36	17	15	M10x1	M04	6	12	5	17	6	5	8	20
●	W911012.Q06X09	45	20	18	M12x1,5	M05	10	14	6	19	7	6	9	32
●	W911016.Q08X12	58	26	24	M16x1,5	M08	12	19	8	24	8	8	12	62
●	W911016.Q10X12	58	26	24	M16x1,5	M08	12	19	8	24	8	10	12	63
●	W911020.Q12X15	70	33	31	M20x1,5	M10	12	22	10	30	9	12	15	134

### Version W911 CIN - stainless steel (Aisi 303)

INOX

🛒	Art.	H	h	h1	d2	d3	h3	e	s	e2	s2	d1 -0,02 -0,04	Q	📦
●	W911010.I05X08CIN	36	17	15	M10x1	M04	6	12	5	17	6	5	8	20
●	W911012.I06X09CIN	45	20	18	M12x1,5	M05	10	14	6	19	7	6	9	32
●	W911016.I08X12CIN	58	26	24	M16x1,5	M08	12	19	8	24	8	8	12	62
●	W911016.I10X12CIN	58	26	24	M16x1,5	M08	12	19	8	24	8	10	12	63
●	W911020.I12X15CIN	70	33	31	M20x1,5	M10	12	22	10	30	9	12	15	134