

W790



PA6
+GF

UL94
HB



KNOB-STYLE BLACK OXIDE TREATED STEEL INDEXING PLUNGER WITH FLANGE

Material:

(3) Reinforced polyamide scallop knob. Cannot be removed.

Inserts:

- (4) Stainless steel spring.
- (1) Unthreaded steel body with incorporated bored flange.
- (2) Hardened high resistance steel plunger pin.

ATTENTION: The manufacturer recommends making the lodging hole for the plunger pin with a tolerance H7.

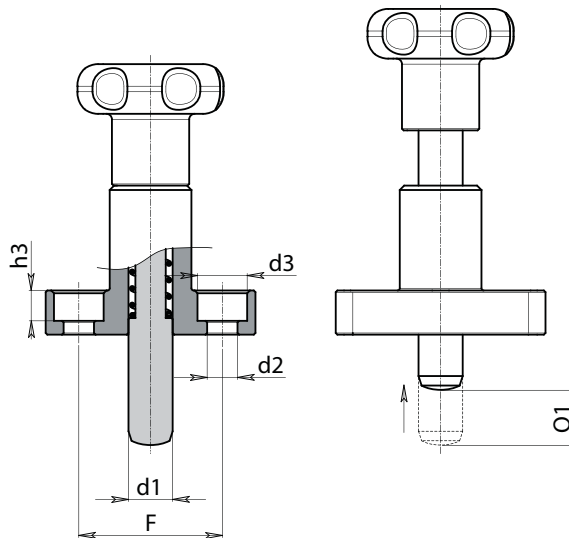
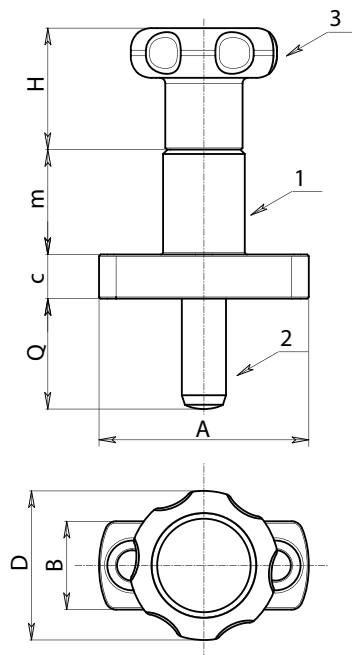
Surface:

- (3) Black satin finish (RAL 9011).
- (1.2) Black-oxide finish.

Packs containing 10 pieces.

SPECIAL REQUESTS:

- On request and for special quantities the knob is available in a choice of colours as indicated in the table on page 31.



Art.	D	H	m	c	A	B	F	h3	d2	d3	d1 ^{-0,02}	Q	Q1	g
☺ W790027.Q08X2001	27	22	19	8	38	16	26	5,5	5,5	9	8	20	10	74
☹ W790027.Q08X2201	27	22	19	8	38	16	26	5,5	5,5	9	8	22	12	74
☹ W790027.Q08X2601	27	22	19	8	38	16	26	5,5	5,5	9	8	26	16	75
☹ W790027.Q08X3001	27	22	19	8	38	16	26	5,5	5,5	9	8	30	20	75
☹ W790027.Q10X2201	27	22	19	8	38	16	26	5,5	5,5	9	8	22	10	75
☹ W790027.Q10X2401	27	22	19	8	38	16	26	5,5	5,5	9	8	24	12	75
☹ W790027.Q10X2801	27	22	19	8	38	16	26	5,5	5,5	9	8	28	16	76
☹ W790027.Q10X3201	27	22	19	8	38	16	26	5,5	5,5	9	8	32	20	76

**W - S
PLUNGERS**

ver. W-SUK.01-0613

**BOTECO
METAL LINE**

W-S - 2

Presumable presence in the stock in %

(☺) 90% (☹) 40% (☹) 5%

www.boteco.it - © All right reserved - BOTECO®
Any unauthorized reproduction is strictly forbidden