

1-035SL Captive Fastener 9.5 SNAP-LINE

for cutout 9.5, tool-less installation



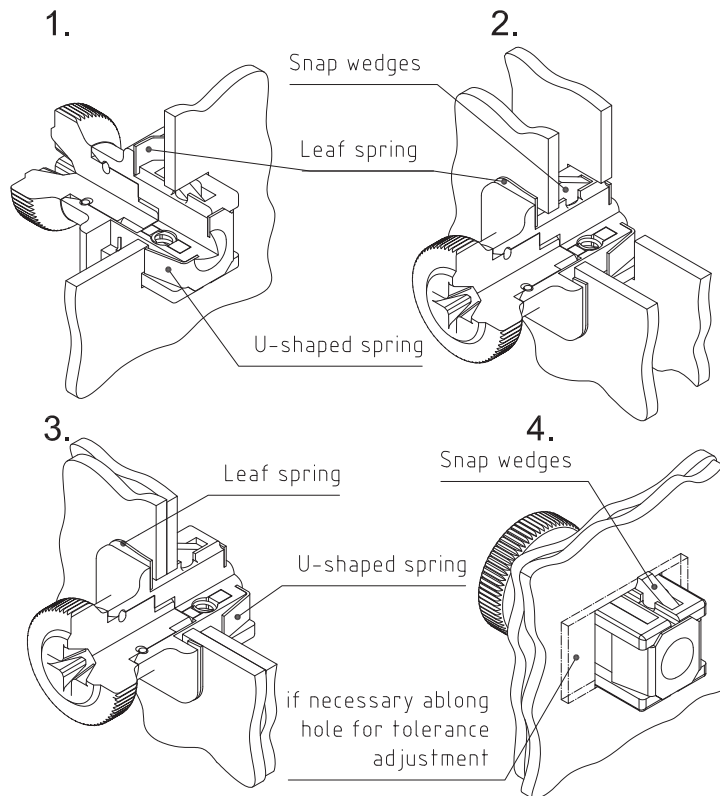
Captive Fastener with two installation systems.

- 1. U-shaped spring for pre-assembly into the front sheet.
- 2. D-SNAP technology for final assembly into the rear sheet.
- Joins doors, covers, rack drawers etc. with the frame/housing.
- The Fastener is captive in the front sheet.
- It is no longer possible to either loose, to drop or to mislay the Captive Fastener.
- In case there are several Captive Fasteners, you can release them one after the other without them dropping out.
- Tool-less installation.
- Completely pre-assembled, one-piece.
- Vibration-proof.

- Save of up to 90% assembly time.
- Two kinds of inserts are available:
 1. Turning Knob with recessed head for Phillips H2.
 2. Slotted insert for screw-driver (1.2 x 5.5mm).

Material:

- **Housing:** zinc die, chrome plated or black
 - a)
- **Insert:** steel, zinc plated
 - b)
- **Insert:** Alu, eloxiert
- **Leaf spring:** stainless steel
- **U-shaped spring:** spring steel
- **Snap wedges:** sintered steel
- **Attention: The insert supplied with the black housing is steel, zinc plated.**



Install:

Image 1: The Captive Fastener is pushed into the front panel (e.g. 19" drawer, cover panel). The riveted U-shaped spring widens to prevent the Fastener from falling out of the panel. This keeps it secure and makes it captive. The cutout can be made larger to allow for tolerance adjustment.

Image 2: The Captive Fastener, pre-assembled in the front panel, is inserted into the cutout of the rear panel (Image 3) and kept in position by the SNAP wedges. This ensures alignment of the two panels.

Images 3 and 4: Full insertion of the Captive Fastener into the second panel securely joins the two panels for a vibration-proof connection.

Disengage Panels:

1. By turning the insert (Turning Knob or Screwdriver) the snap-wedges are pulled backwards and the front panel can be disengaged from the back panel.

2. The Captive Fastener is held in position and remains held in the front panel by the U-shaped spring.

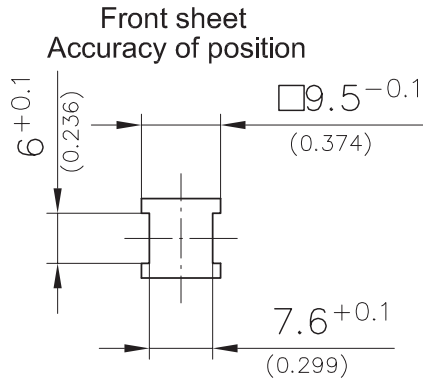
Applications which require more than one Captive Fastener:

In applications using more than one Captive Fastener, the Captive Fastener can be pre-released, one-by-one, by turning the insert (Turning Knob or Screwdriver) and pulling the Captive Fastener until the U-shaped spring touches the front panel. When all the Captive Fasteners have been pre-released, the front panel can be removed from the back panel. The Captive Fasteners stay assembled and held in the front panel by the U-shaped spring.

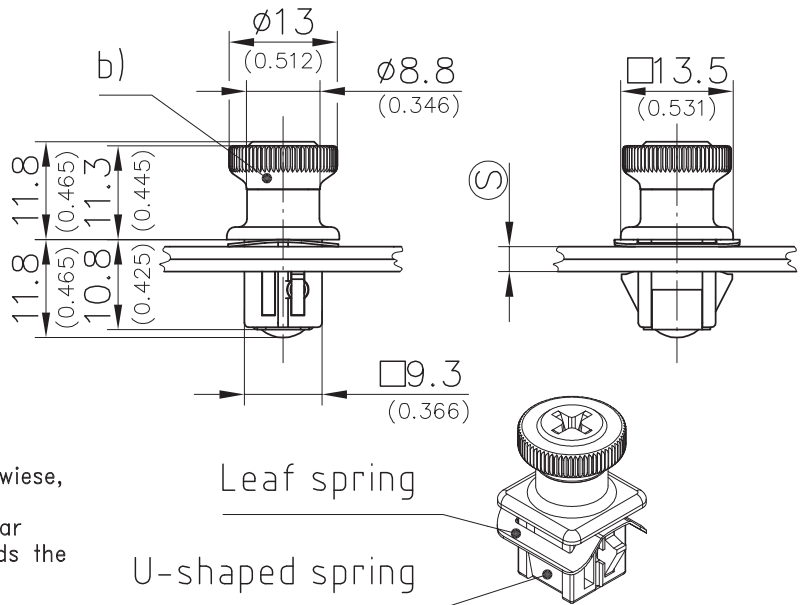
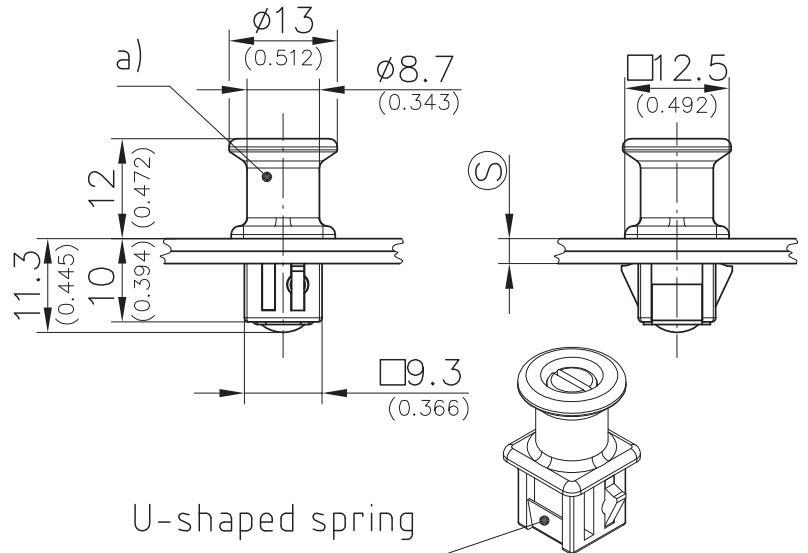
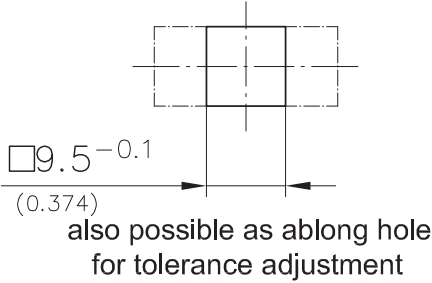
1-035SL Captive Fastener 9.5 SNAP-LINE

for cutout 9.5, tool-less installation

Cutouts
incl. paint



Rear sheet
(housing, frame etc.)



By turning the Turning Knob counterclockwise, the SNAP wedges are retracted. The leaf spring pushes the Fastener out of the rear panel, however, the U-shaped spring holds the Fastener captive in the front panel.

a) Fastener with handle and slotted insert		
clamping range ⑤	matt chrome plated	black
1.5 - 2.2	294-9202.00-00020	294-9203.00-00020
2.3 - 2.8	294-9202.00-00025	294-9203.00-00025
2.9 - 3.4	294-9202.00-00030	294-9203.00-00030
3.5 - 4.0	294-9202.00-00038	294-9203.00-00038
4.1 - 4.6	294-9202.00-00045	294-9203.00-00045
4.7 - 5.2	294-9202.00-00050	294-9203.00-00050
b) Fastener with Turning Knob and recessed head plus leaf spring		
clamping range ⑤	matt chrome plated	black
1.5 - 2.0	294-9210.00-00017	294-9211.00-00017
2.5 - 2.8	294-9210.00-00026	294-9211.00-00026
3.3 - 3.6	294-9210.00-00034	294-9211.00-00034
4.1 - 4.4	294-9210.00-00042	294-9211.00-00042