



# 1-041.01SL Fastener 9.7 SNAP-LINE



for cutout 9.7, tool-less installation

## Benefits:

- ▶ Fastener for joining flat metal sheets.
- ▶ The joining of metal sheets is achieved by pushing the Fastener into the cutouts.
- ▶ The dimension (S) always means the thickness of both sheets together.

## Material:

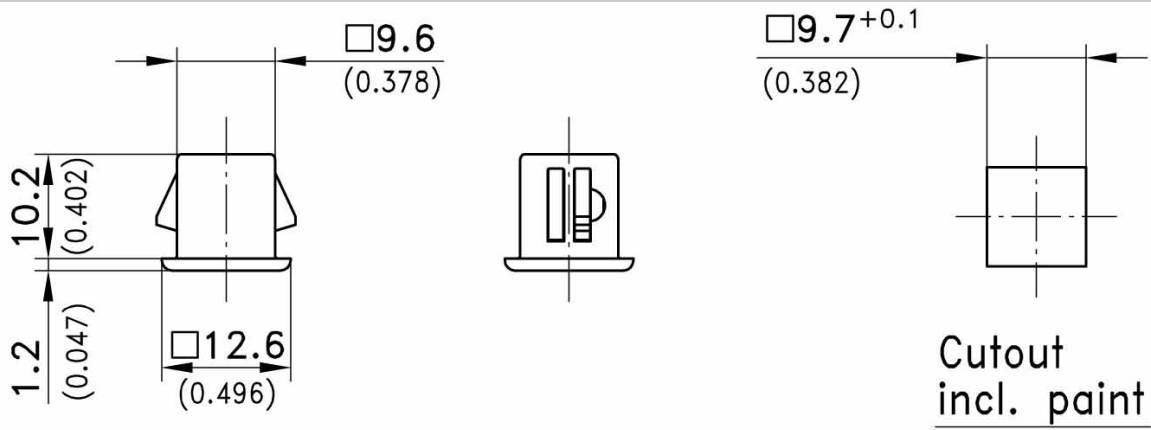
- ▶ **Housing:** zinc die, untreated
- ▶ **Snap wedges:** sintered steel, zinc plated

1. = Cutout rear panel, also possible as  
ablong hole for tolerance adjustment  
2. = Cutout front panel



## Fastener

Part Number	Clamping range (S)	Vibration-proof	Installation type
294-9104.00-02224	2,2 - 2,4 mm	Yes	Tool-less
294-9104.00-02527	2,5 - 2,7 mm	Yes	Tool-less
294-9104.00-02830	2,8 - 3,0 mm	Yes	Tool-less
294-9104.00-03133	3,1 - 3,3 mm	Yes	Tool-less



Example of application

