



1-057SL Quarter-Turn Pr14.1 L13.5 SNAP-LINE

for cutout 14.1, length 13.5, clip-in assembling

Benefits:

- Clip-in Quarter-turn SNAP-LINE.
- RH or LH application.
- The Quarter-turn consists of two basic components which can be combined to suit your application.
- A pre-assembled Quarter-turn can be installed in the cutout.

Explanation of the clip-in feature:

- The 2 clip-in noses (refer to drawing) must be able to move into the direction of the insert.
- This is only possible in the assembled delivery condition (OPEN) as supplied by DIRAK.
- In the position "closed" the 2 clip-in noses can NOT move inwards, resulting in secure and strong fixation in the cutout.

Material:

- a)
 - **Housing:** PA, black
 - **Insert:** PA, black
 - **Hexagon head screw:** stainless steel
- b)
 - **Cam:** steel, zinc plated



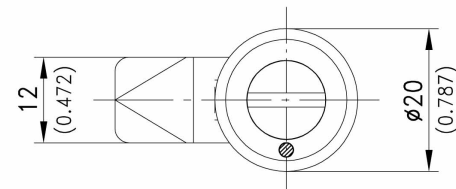
Quarter-turn housing with Insert

	Part Number	Insert	Housing length	Door-thickness	Material	Surface	Installation type
a)	220-9701.00-00000	Slotted 2x4mm	L13.5	0.8 - 1.5mm	PA	black	tool-less

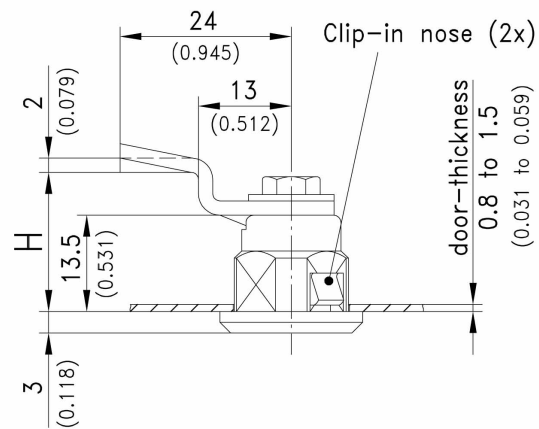
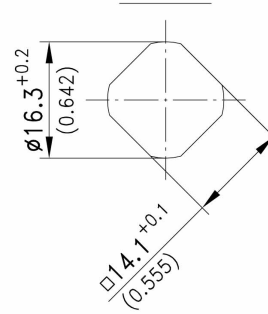
Complementary Products:

	1-050	Cams
b)	1-058	Cams
b)	220-0008.00-00000	Assembling (always in open condition)
c)		

(open position=delivery condition)



Cutout



installation instruction for pre-assembled quarter-turn

left door

right door

