



# 1-068 Pull Latch Handle



for 19" technology

## Benefits:

- ▶ The Pull latch handle is used by 19" engineering for locking insertions.
- ▶ The completely pre-assembled unit is fastened by a countersunk screw M4.
- ▶ LH and RH application.
- ▶ When inserting the plug-in unit the free running slam hook latches into the appropriate cutout and locks the plug-in unit with the frame.
- ▶ Drawing at the handle unlocks the plug-in unit and it can be pulled out by the handle.
- ▶ The countersunk screw is not included.

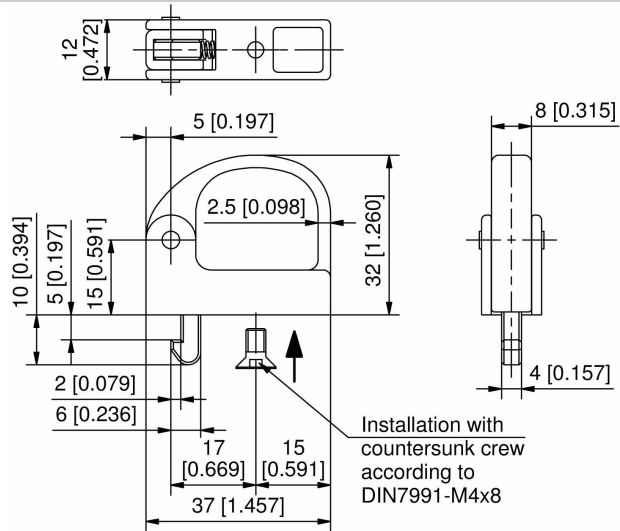
## Material:

- ▶ **Housing and handle:** zinc die, matt chrome plated
- ▶ **Spring for insert:** spring steel
- ▶ **Hook:** sintered steel, zinc plated

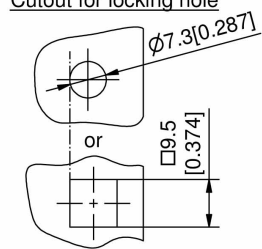


## Pull latch handle

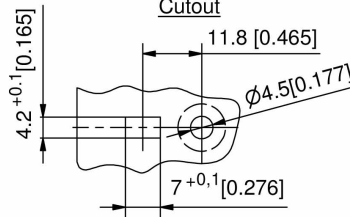
Part Number	Installation type
280-9101.00-00000	screw-on



Cutout for locking hole



Handle assembling Cutout



Operation

