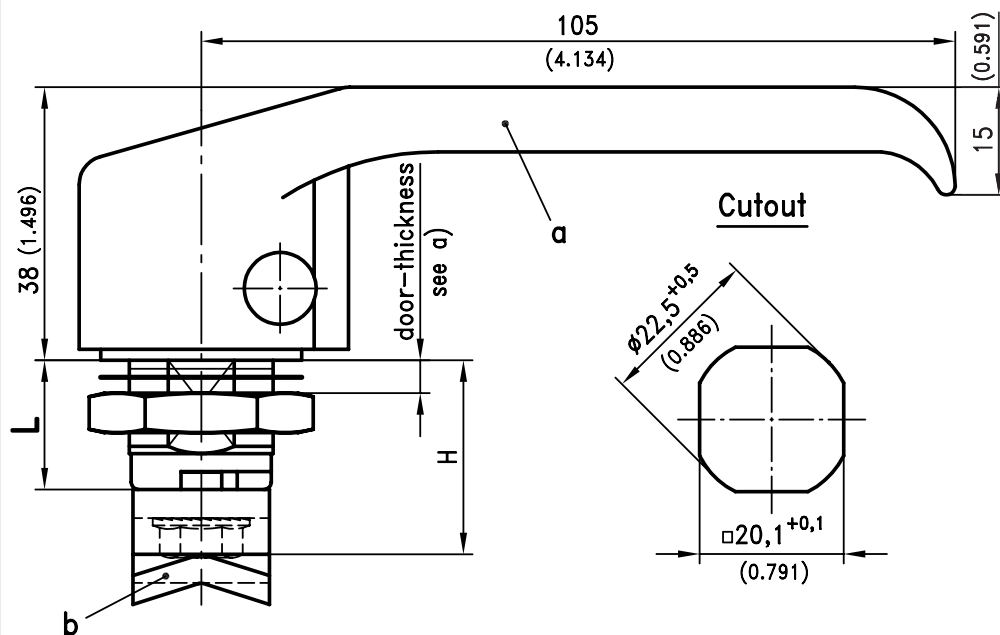
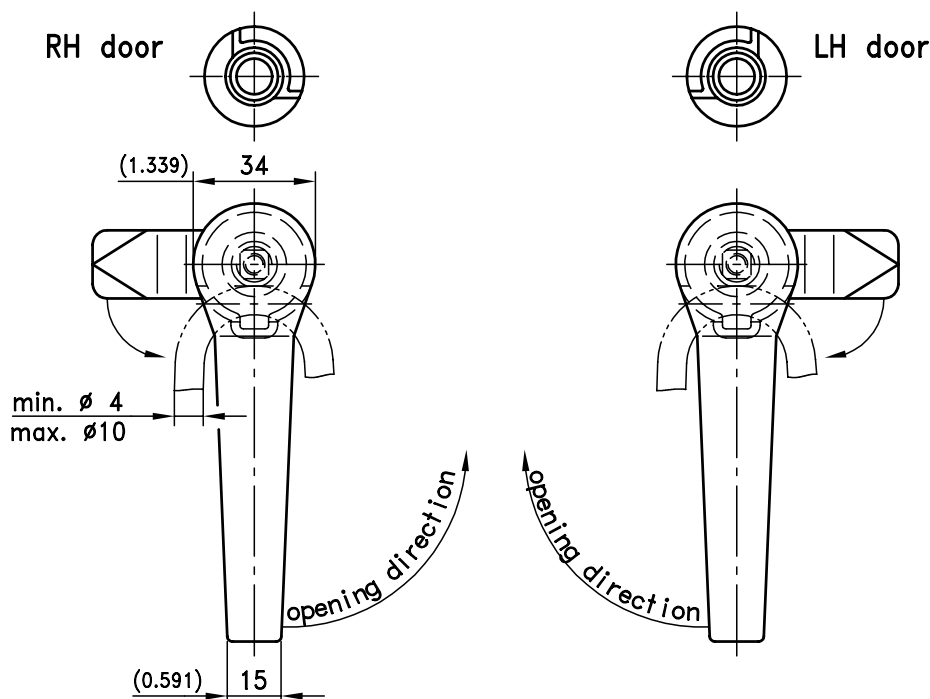


1-154 Quarter-Turn with Handle Pr20.1 L18/40 for Padlock



Fitting position of the housing, seen from outside of the door, at



L-Handle for padlock with 90° rotation, Screw-in type.

- RH or LH application.
- Water- and dust-tight according to IP65.
- This L-Handle consists of two basic parts which can be combined to suit your application.
- On request cam can be assembled by DIRAK.
- A pre-assembled handle can be installed in the cutout.
- **Padlock feature only when cam is at 90° to the handle.**

Material:

- a)
- **L-Handle:** zinc die, chrome plated or black coated
 - **Housing:** zinc die, zinc plated
- b)
- **Cam:** steel, zinc plated

	E-coated	Textured Powder
a) L-Handle	chrome plated	black
with plain/grounding/earthing nut		
L = 18 (door thickness max. 8mm)	200-9463	200-9464
L = 40 (door thickness max. 30mm)	200-9491	200-9492
b) One- two- or three point cams see product system 1-100 and 1-110		
Special cams see product system 1-262.		
Optional:		
c) Assembling for right door	200-0019	
Assembling for left door	200-0020	
Stainless steel version see product system 7-100.		

12/15/08

© copyright by DIRAK / Germany

