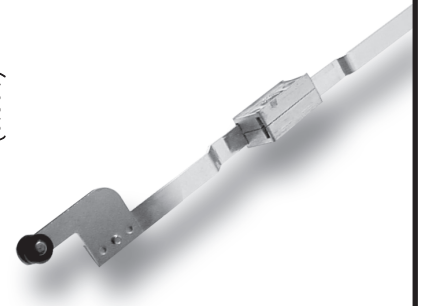
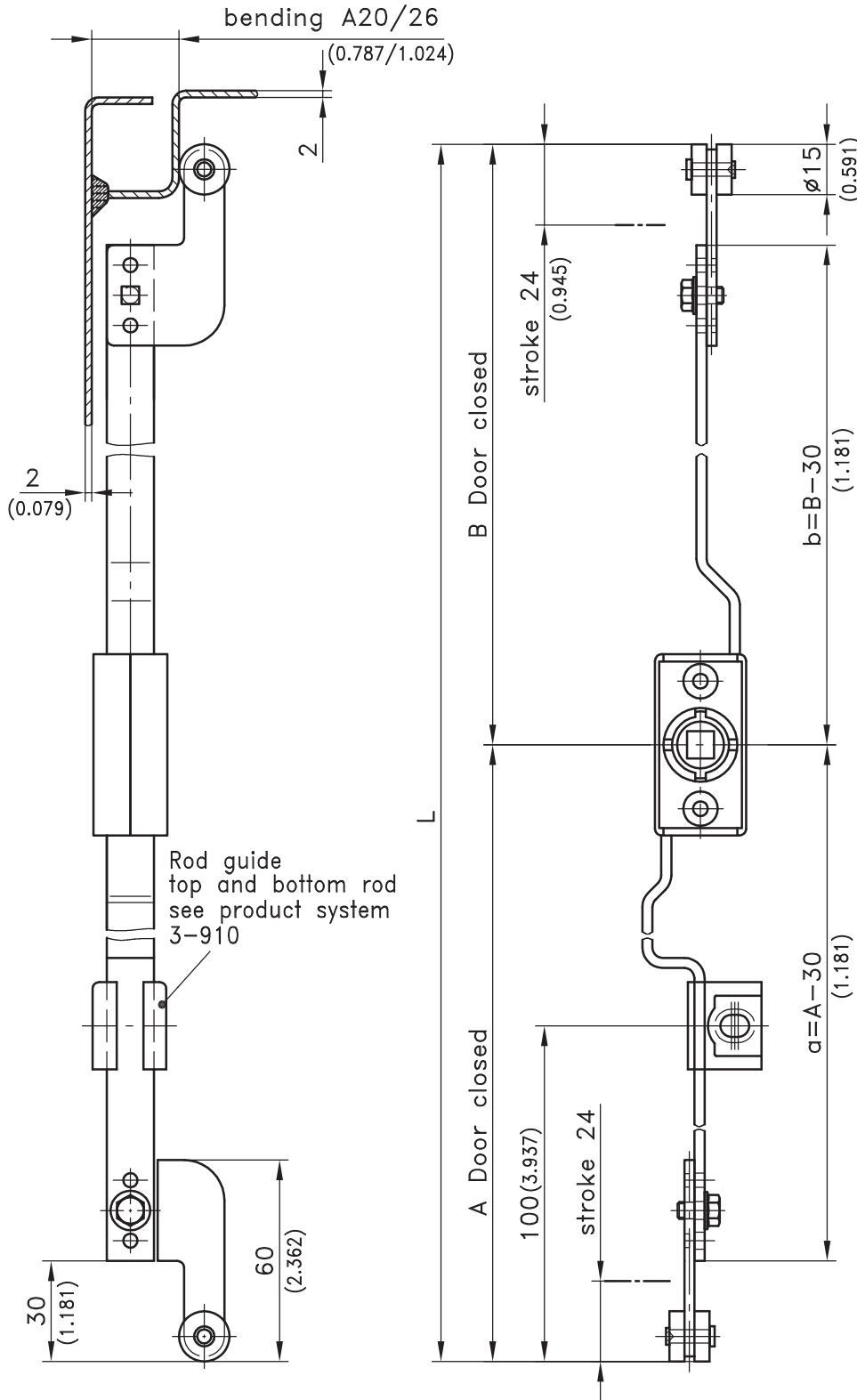


3-165 Rod-Latch FS PrA/C



Rod-Latch system pre-assembled and ready for installation.

- This system is applied on the inside of the sealing area.
- Please indicate: Bending A, dimensions A and B (door closed).
- The direction of opening can easily be changed from RH to LH and vice-versa.
- This system can be applied for cutout version A 50x25mm and version C 50x25mm.
- The minimal enclosure clearance for application with symmetrical door is 480mm / 18.898.
- Additional dimensions of cutout versions A and C see product system 3-010.
- Additional accessories see product system 3-100, 3-110, 3-130 to 3-153, 3-162 and 3-910.

Attention:
Minimum Quantity 100 pcs.

Rod Latch System		208-9715.L in mm
Right-angle terminal	A20	208-9902.00-00020
	A26	208-9902.00-00026

Attention: Drawn is the situation "Door closed" with hinges on LH side.

12/16/08

© copyright by DIRAK / Germany

