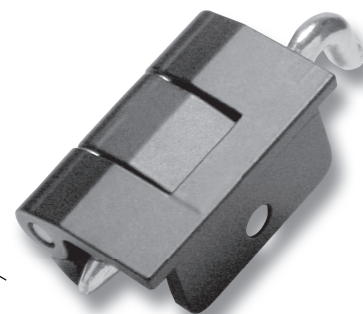
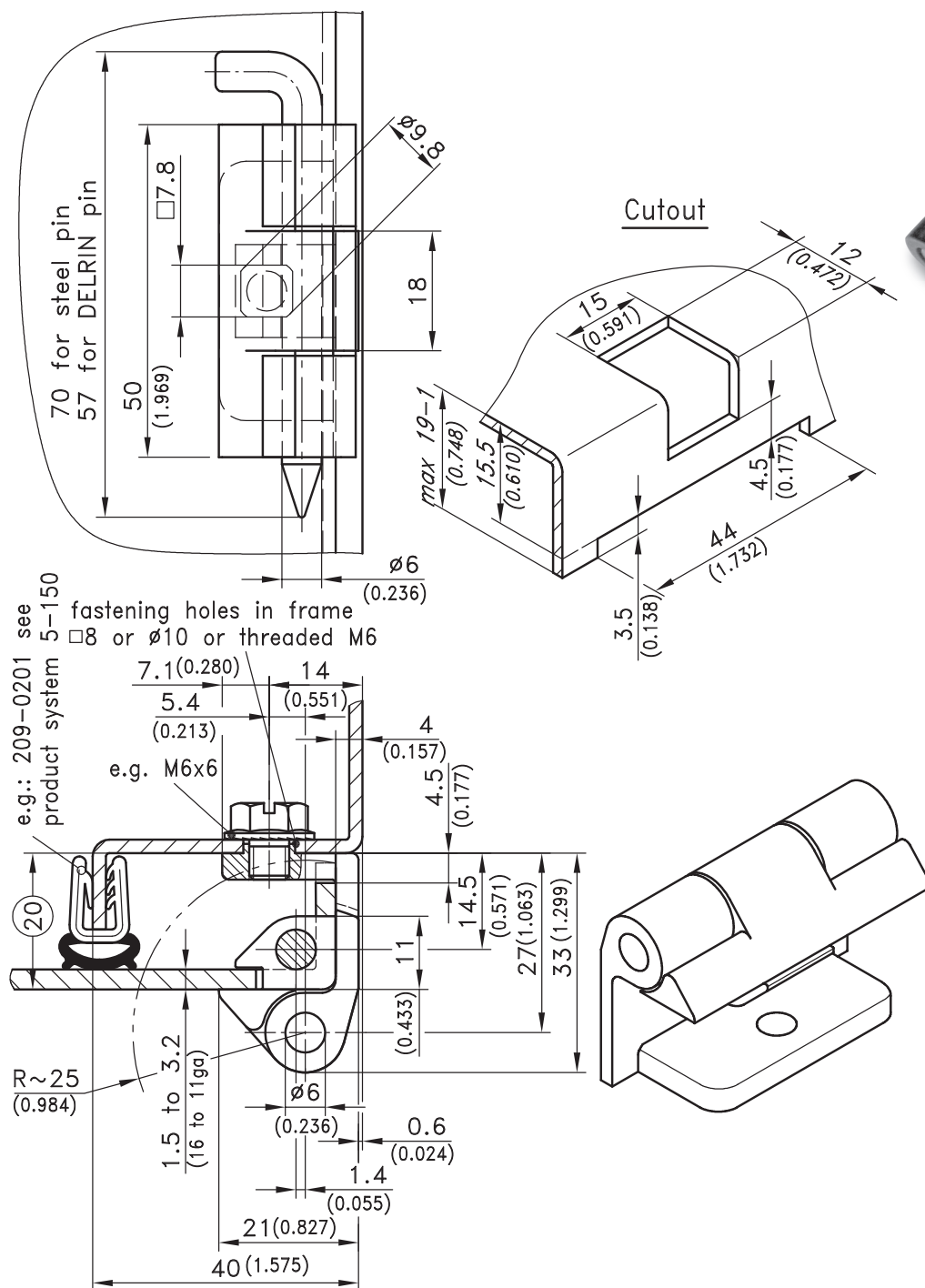


4-161 Concealed Hinge Pr05 180°

Adjacent cabinets, Door bending 20mm for nested door or surface mounted door



180° hinge for surface mounted doors.

- RH or LH application.
- Closed cutout.
- Doorbend 20mm (0.787)

Material:

- **Hinge:** zinc die, chrome plated or black coated
- **Washer:** brass, nickel plated
- **Pin:** steel, zinc plated or DELRIN

Frame part	door gauge 1.5 to 2 (16 to 14ga)		door gauge 2.5 to 3.2 (12 to 11ga)
	black coated	chrome plated	black coated*
a) with M6 threaded stubs	212-9027	212-9025	212-9527
a1) countersunk for 6mm	212-9028	212-9026	212-9528
b) with M6 threaded stubs and pin, DELRIN	212-9035	212-9033	212-9535
b1) countersunk for 6mm and pin, DELRIN	212-9036	212-9034	212-9536

* Chrome plated versions on request.

For fitting hardware please see product system 6-040 / 6-041.

12/16/08

© copyright by DIRAK / Germany

