



4-182.01SL Hinge Pr05 SNAP-LINE 180°



door bending 25mm, for surface mounted door, frame-part and door-part snap-in, tool-less installation

Benefits:

- ▶ 180° Hinge SNAP-LINE for adjacent cabinets.
- ▶ Installation of both door-part and frame-part by simple snap-in.
- ▶ Seal for frame-part to Frame on request.
- ▶ Dual hook SNAP-LINE with system dimension (18) see product system 3-960SL.
- ▶ Water- and dust-tight according to IP65 DIN EN 60529 by using the O-ring 200-1005.00-02420 (not included).
- ▶ For uninstallation see product system 4-182SL.
- ▶ 180° Opening angle.

Material:

- ▶ **Frame-part:** zinc die, black
- ▶ **Door-part:** zinc die, black
- ▶ **Snap wedges:** sintered metal, coated
- ▶ **Pin:** stainless steel
- ▶ **Washer:** brass



Hinge, material-thickness Door/Frame different

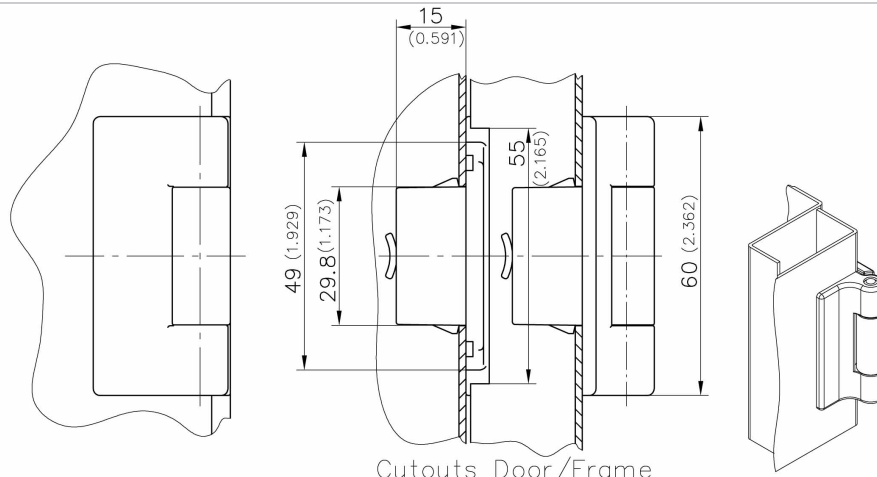
Part Number	Pin version	Material Pin	Clamping range frame-part (S)	Clamping range frame-part (S)	Installation type
412-8001.00-01525	pressed in	stainless steel	1.2 - 1.7	2.2 - 2.7	Tool-less

Hinge, door-/ frame-thickness identical e.g.

Part Number	Pin version	Clamping range (S)	Material Pin	Installation type
412-9001.00-00015	pressed in	1.2 - 1.7	stainless steel	Tool-less
412-9001.00-00020	pressed in	1.7 - 2.2	stainless steel	Tool-less
412-9001.00-00025	pressed in	2.2 - 2.7	stainless steel	Tool-less
412-9001.00-00030	pressed in	2.7 - 3.2	stainless steel	Tool-less
412-9001.00-00035	pressed in	3.2 - 3.7	stainless steel	Tool-less

Complementary Products:

200-1005.00-02420	O-ring 24x2.0
292-0402.00-03014	Cutout-cover
292-0701.15-01530	Reinforcement plate for cutout SNAP-LINE
292-0306.80-02530	Tool for uninstallation
292-0301.15-00000	Tool for uninstallation



Cutouts Door/Frame
(incl. paint)

