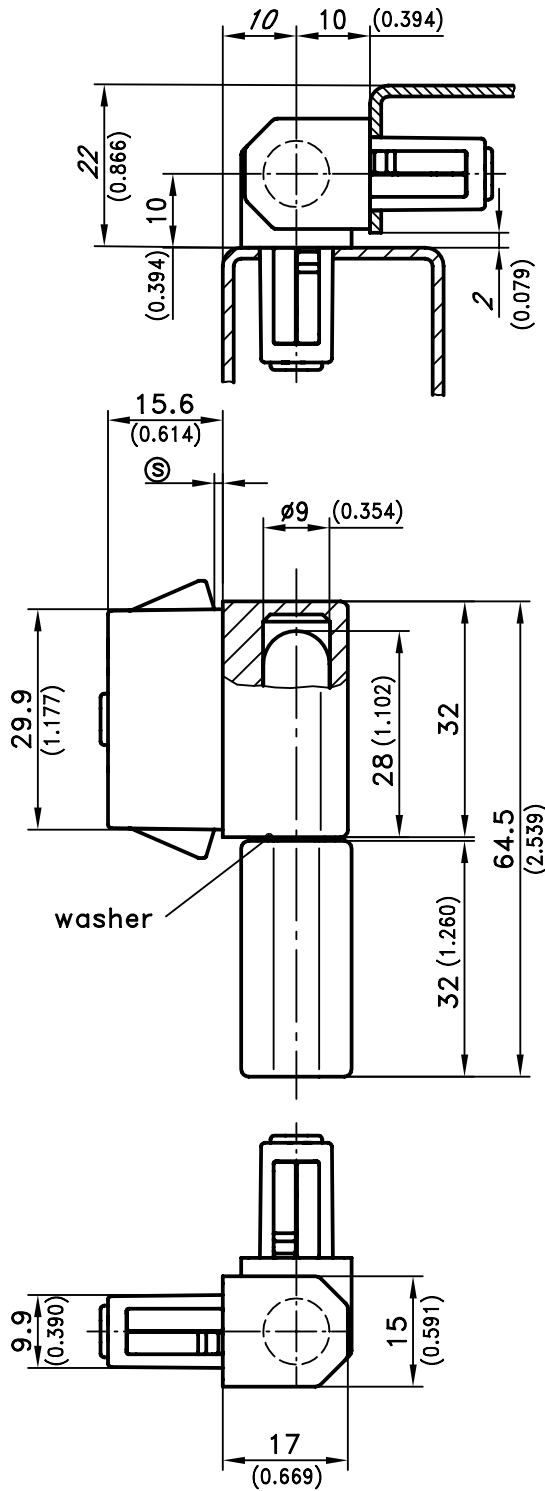
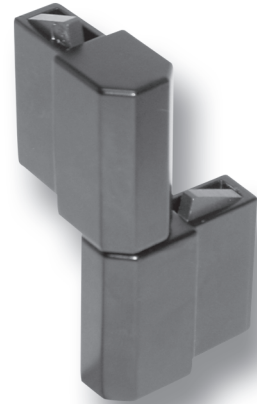
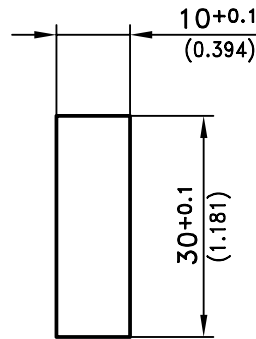


Example of application



Cutout



Elegant 180° hinge for surface mounted doors

- Lift off.
- RH or LH application.
- The installation of the frame part and door part is achieved by a simple push into the appropriate cutouts.
- Cutout-Cover for cutout 30x10: 292-0401.00-03010.
- Reinforcement plate for thin-walled sheets and for higher loads: 292-0702.15-01030.
- Tool for uninstallation: 292-0306.80-02530.

Material:

- **Hinge parts:** zinc die, black matt E-COATED
- **Pin, cast on:** zinc die
- **Solid pin, pressed in:** stainless steel
- **For heavy duty!**
- **Washer:** Teflon, black
- **Snap wedges:** sintered steel
- **Spring:** spring steel
- **Plug:** PA, red

For thin-walled sheets we recommend to use Reinforcement Plates (product system 6-079SL).

clamping range (S)	Pin, cast on	Solid Pin, pressed in
0.7 - 1.2	417-9004.00-00010	417-9009.00-00010
1.2 - 1.7	417-9004.00-00015	417-9009.00-00015
1.7 - 2.2	417-9004.00-00020	417-9009.00-00020
2.7 - 3.2	417-9004.00-00030	417-9009.00-00030

Other (S) - dimensions on request !

12/15/08

© copyright by DIRAK / Germany

