

6-060SL Wire Catch SNAP-LINE

Polyamide



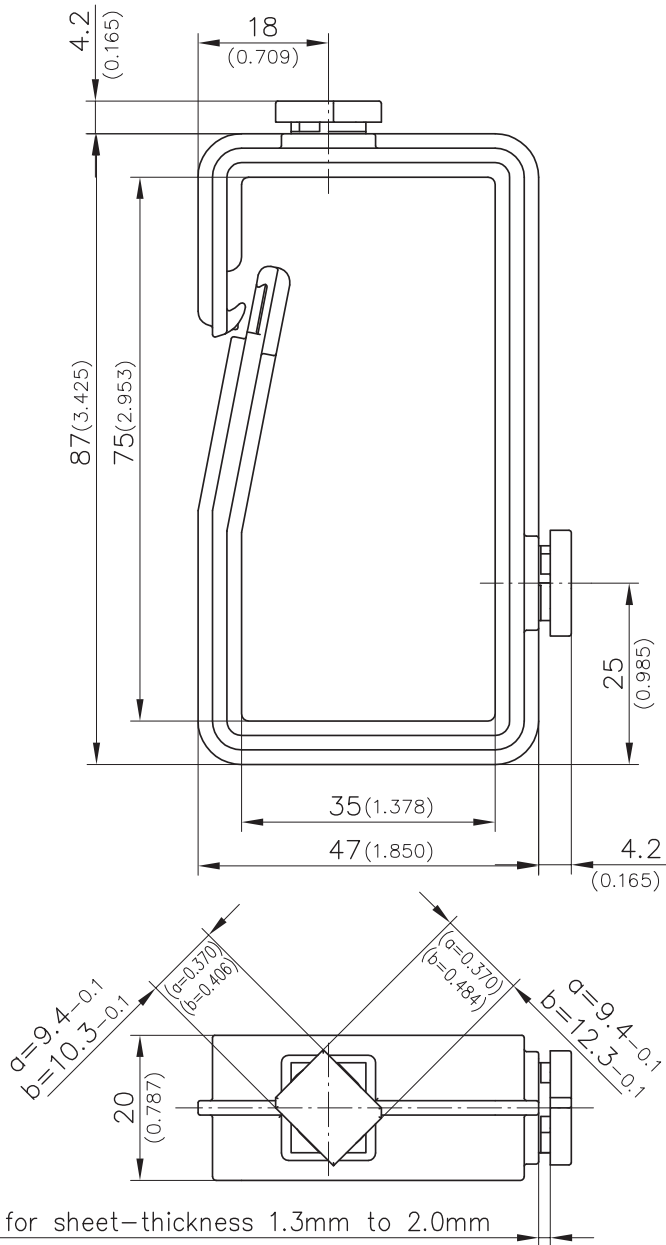
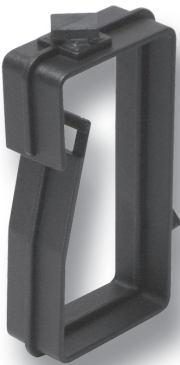
Wire Catch SNAP-LINE for cable management inside cabinets.

- The Wire-Catches can be fitted onto pre-punched channels/profiles.
- Time-saving installation.
- Automatic, built-in catch device to prevent widening.
- **Advantages:**
- Easy installation in a suitable square hole by turning 45°.

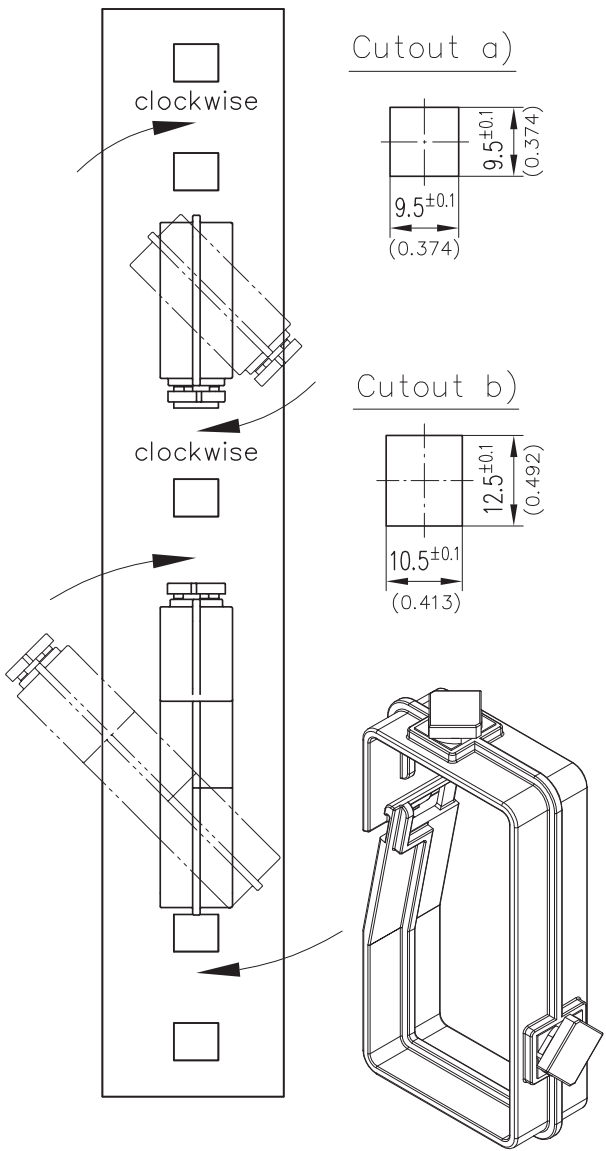
- The jamming of the bow parts in the range of the opening when the cable support is filled.
- In the end this increases the stability and possibly avoids a breaking.
- **Installation:** Enter the wire-catch in an angle of about 45° into the cutout and turn 45° clockwise. At this end position the special shape makes the wire-catch fixed in the cutout.

Material:

- PA, black



Example of application



| version | Part No. |
|------------------------------------|-------------------|
| a) Wire-catch 9.5x9.5 | 214-0106.50-00013 |
| b) Wire-catch 12.5x10.5 (as drawn) | 214-0105.50-00013 |

Other cutouts and sheet-thicknesses on request.