



6-210SL Locking Pin with Handle SNAP-LINE



Lids and covers can be stopped and locked at predetermined positions

Benefits:

- Locking pin with spring-loaded handle.
- Installed using a simple push into the cutout.
- Lids and covers can be stopped and locked at predetermined positions.
- Can be used as a locking device for drawers.
- Large, ergonomically designed handle for ease of use.
- Also available as concealed hinge, see product-system 4-393SL.

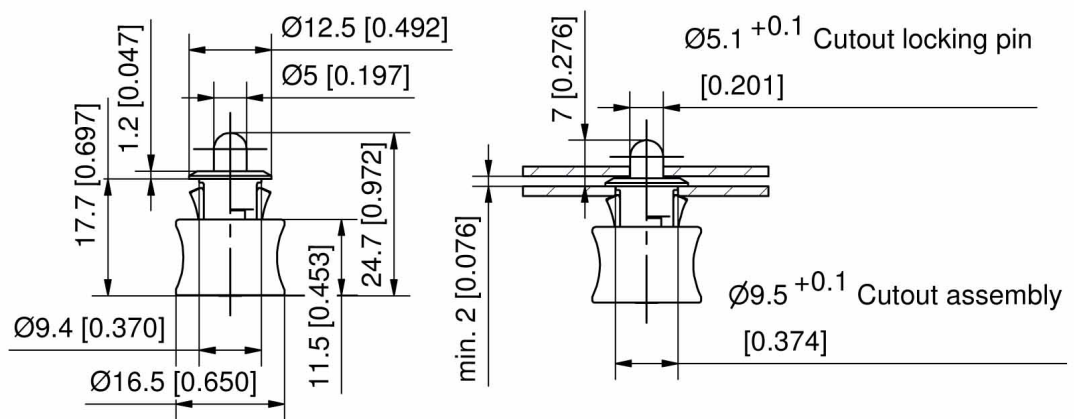
Material:

- **Housing:** PA, black
- **Handle:** PA, green
- **Pin:** steel, zinc plated
- **Spring:** steel, zinc plated

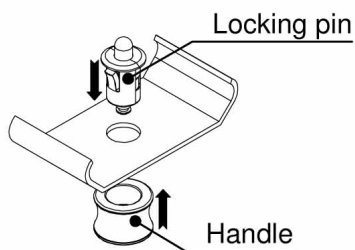


Locking pin with handle

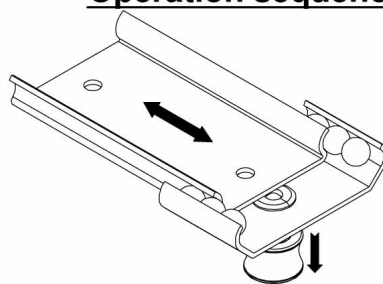
Part Number	Installation type	Clamping range
245-9304.00-00000	tool-less	1,4 - 1,6 mm



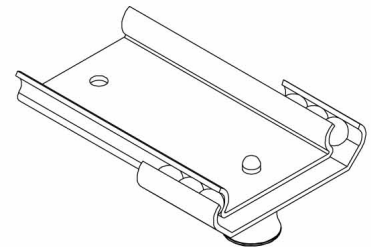
Operation sequence



To install, the locking pin is simply pushed into the cutout without the use of tools or hardware. The handle slides over the housing and secures permanently into the groove of the pin.



To lock, the spring-loaded handle is released. To loosen, the spring-loaded handle is pulled out.



The pin catches in the pre-punched holes to lock in place.