



# 7-321.01 Toggle-Latch

RoHS  
WEEE

Locking system for industrial application

### Benefits:

- ▶ Secure tightening and locking of two components.
- ▶ Clicks into place securely.
- ▶ Slider for releasing.
- ▶ Vibration-proof.
- ▶ The catch is included in the scope of delivery.
- ▶ Version a) with recessed ruffle.
- ▶ Version b) with raised ruffle.

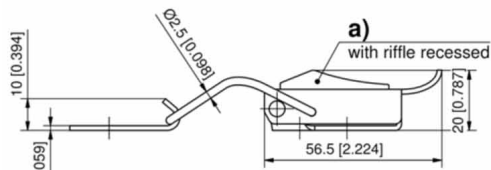
### Material:

- ▶ **Toggle-Latch:** stainless steel AISI 304
- ▶ **Release slider:** stainless steel AISI 304 or ABS, red



## Toggle-Latch

	Part Number	Version
a)	350-2080.00-00000	with stainless steel release slider
b)	350-2080.00-00001	with ABS release slider

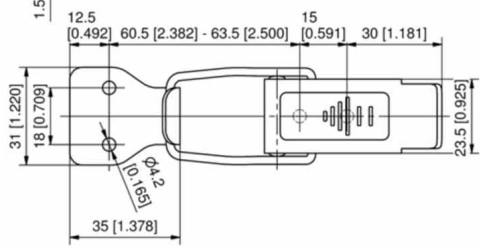


**a)**

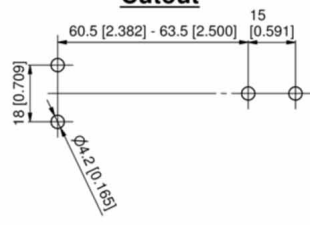
with raffle recessed

**b)**

with raffle raised



**Cutout**



**Operation**

