

3-400 Swinghandle base



Advantages

- Tool-less assembly.
- Tool-less pre-installation, self-locking (clip-in) in sheet metal with thickness of 1.5 or 2.0mm.
- Independent of panel thickness up to 3mm.
- Closing with slam latch.
- Handle with lifting spring.
- Tool-less replacement of the cylinder cover.
- RH / LH application.
- IP65 according to DIN EN 60529 by optional sealing kit 307-9153.00-00000.
- For profile-cylinder with closing position 6 o'clock.

Materials

- **Handle, Dish, cap:** PA, black
- **Cylinder dustcover:** PA, black
- **Padlock bolt:** zinc die, zinc plated
- **Shaft:** Grivory
- **Slam lock:** POM
- **Spring:** steel
- **O-Ring:** NBR

Remarks

- b) LED module retrofittable
Padlock version **not** in combination with LED-Module useable



Swinghandle PA, black for profile-cylinder

	Part Number	Latching type	Material cylinder cover	Padlock bolt	Installation type
a)	307-9101.00-00000	profile-cylinder 40mm	PA, black		tool-less
e)	307-9102.00-00000	profile-cylinder 40mm	PA, black	Yes	tool-less

Swinghandle PA, black, slam latch

	Part Number	Latching type	Material cylinder cover	Padlock bolt	Installation type
a)	307-9103.00-00000	self-locking	PA, black		tool-less
e)	307-9104.00-00000	self-locking	PA, black	Yes	tool-less

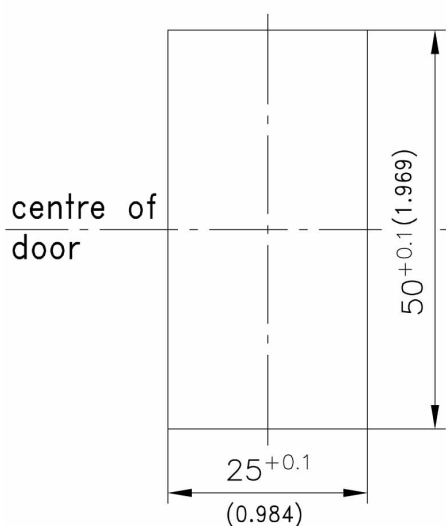
* Specific accessories

- b)-c) 3-400 **Accessories for Swinghandle base**
 - 3-440 **Bearing Plate RS base**
 - 307-9154.00-00000 **Rod latch adapter**

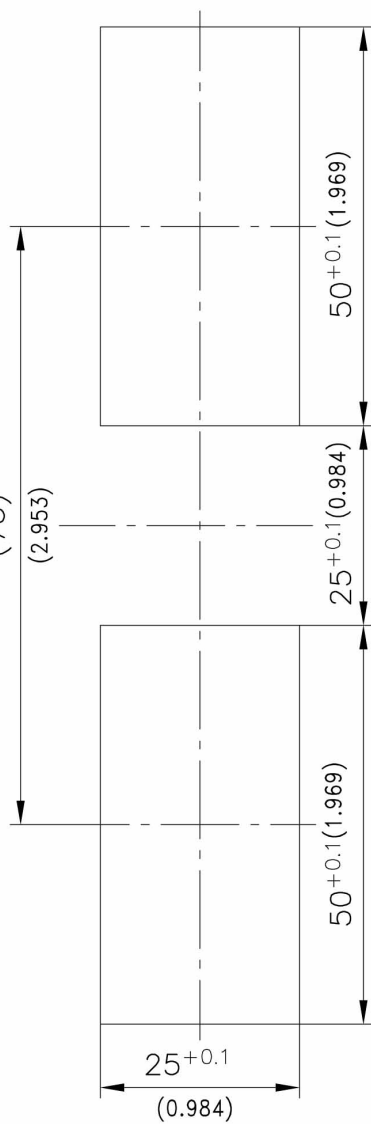
* Complementary products

- d) 3-130 **Rod Latch FS PrC**
 - 211-9004.00-00000 **DIRAK Profile-cylinder**
 - 211-9003.00-00000 **DIRAK Profile-cylinder**
- c) 307-9153.00-00000 **Sealing kit + Cap**

Program
Cutout
Version A
(PrA)



Program
Cutout
Version B
(PrB)



Program
Cutout
Version C
(PrC)

