

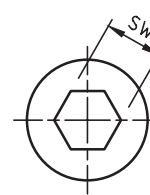
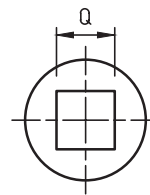
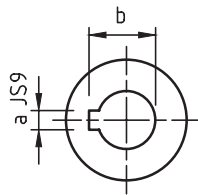
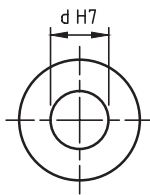
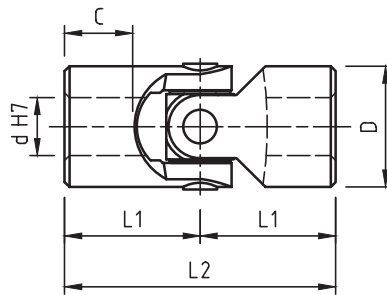


# GIUNTI SINGOLI IN ACCIAIO INOX

## STAINLESS STEEL SINGLE JOINTS

serie «X»  
series (DIN 808)

- Angolo max. 45°  
Max angle 45°
- "Esecuzione innesto rapido, vedi pagina 11".  
"Quick release execution, see page 11".
- "Esecuzione a morsetto tipo CL1 o CL2, vedi pagine 20 e 21".  
"Clamping hub execution type CL1 or CL2, see pages 20 and 21".
- Esecuzioni speciali a richiesta.  
Special executions on request.



| Mod. Type | Codice / Code | d  | D  | L2  | L1 | C  | a * | b *  | Q * | SW * | Peso Weight Kg |
|-----------|---------------|----|----|-----|----|----|-----|------|-----|------|----------------|
| 01X       | SX0S 0600     | 6  | 16 | 34  | 17 | 8  | 2   | 7    | 6   | 6    | 0,05           |
| 02X       | SX0S 0800     | 8  | 16 | 40  | 20 | 11 | 2   | 9    | 8   | 8    | 0,05           |
| 03X       | SX0S 1000     | 10 | 22 | 48  | 24 | 12 | 3   | 11,4 | 10  | 10   | 0,10           |
| 04X       | SX0S 1200     | 12 | 25 | 56  | 28 | 13 | 4   | 13,8 | 12  | 12   | 0,16           |
| 1X        | SX0S 1600     | 16 | 32 | 68  | 34 | 16 | 5   | 18,3 | 16  | 16   | 0,30           |
| 3X        | SX0S 2000     | 20 | 42 | 82  | 41 | 18 | 6   | 22,8 | 20  | 20   | 0,60           |
| 5X        | SX0S 2500     | 25 | 50 | 108 | 54 | 26 | 8   | 28,3 | 25  | 25   | 1,20           |
| 6X        | SX0S 3000     | 30 | 58 | 122 | 61 | 29 | 8   | 33,3 | 30  | 30   | 1,85           |

\*= Non sempre disponibile a magazzino / Not always available in stock