

CN series

Caratteristiche

Materiale Corpo:

Mescola Gomma NR/SBR

Durezza standard:

60 Shore A

Tolleranza sulla durezza:

+/- 5 SH

A richiesta:

Differenti lunghezze della Vite

Parte Metallica e/o

Fissaggio:

Vite e Rondella Zincate

Tipo Inserto Standard:

Vite pressata sulla Rondella

Product specification

Main Part Material:

NR/SBR Rubber Compound

Standard Hardness:

60 Shore A

Hardness Tolerance:

+/- 5 SH

On request:

Different Screw Lengths

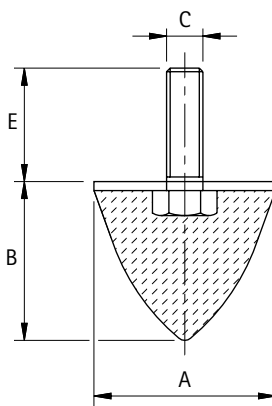
Metallic Part Material &

Finishing:

Zinc Plated Screw and Washer

Standard Thread:

Screw pressed on the washer



Antivibrante Conico Shock - Absorber



Codice	A	B	C	E	Carico max a Compres. daN Max Compression Load daN	Confezione Pz Packing Pcs.
A2CN24	25	22	M6	20	20	1
A2CN26	25	30	M6	18	18	1
A2CN31	30	36	M8	23	25	1
A2CN39	40	30	M8	23	29	1
A2CN41	40	60	M8	23	28	1
A2CN51	50	50	M10	28	54	1
A2CN52	50	64	M8	35	50	1
A2CN61	60	60	M12	33	72	1
A2CN75	75	70	M12	37	117	1
A2CN100	100	85	M16	46	330	1