

# A1X Antivibranti cilindrici in acciaio inox AISI 304

## A1X AISI 304 Stainless steel cylindrical mountings

### MMX series

**Caratteristiche**

**Materiale Corpo:**  
Mescola Gomma NR/SBR

**Durezza standard:**  
60 Shore A

**Tolleranza sulla durezza:**  
+/- 5 SH

**A richiesta:**  
Differenti lunghezze della Vite

**Parte Metallica e/o Fissaggio:**  
Vite e Rondella Inox AISI 304

**Tipo Insetto Standard:**  
Vite pressata sulla Rondella

**Product specification**

**Main Part Material:**  
NR/SBR Rubber Compound

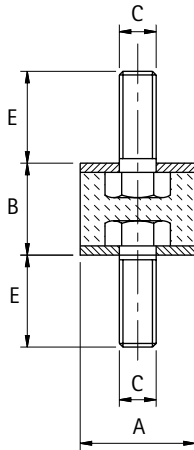
**Standard Hardness:**  
60 Shore A

**Hardness Tolerance:**  
+/- 5 SH

**On request:**  
Different Screw Lengths

**Metallic Part Material & Finishing:**  
Stainless Steel Screw and Washer AISI 304

**Standard Thread:**  
Screw pressed on the washer



### Maschio/Maschio inox AISI 304

#### AISI 304 Stainless Steel Type A (Double Male)

Codice	A	B	C	E	Carico max a Compres. daN Max Compression Load daN	Carico max a Taglio daN Max Shear Load daN	Confezione Pz Packing Pcs.
<b>A1MMX1515</b>	15	15	M4	14	15	2	1
<b>A1MMX2015</b>	20	15	M6	16	34	4	1
<b>A1MMX2520/6</b>	25	20	M6	18	45	5	1
<b>A1MMX3030</b>	30	30	M8	23	61	7	1
<b>A1MMX4030/8</b>	40	30	M8	23	98	15	1