

## MS series

### Caratteristiche

**Materiale Corpo:**  
Mescola Gomma NR/SBR

**Durezza standard:**  
60 Shore A

**Tolleranza sulla durezza:**  
+/- 5 SH

**A richiesta:**  
Differenti lunghezze della Vite

**Parte Metallica e/o**

**Fissaggio:**  
Vite e Rondella Zincate

**Tipo Inserto Standard:**  
Vite pressata sulla Rondella

### Product specification

**Main Part Material:**  
NR/SBR Rubber Compound

**Standard Hardness:**  
60 Shore A

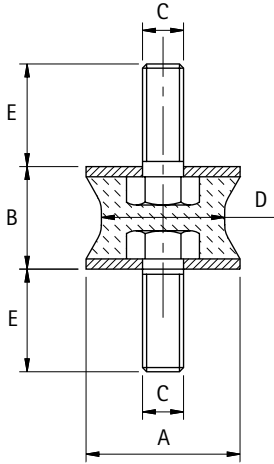
**Hardness Tolerance:** +/- 5 SH

**On request:**  
Different Screw Lengths

**Metallic Part Material &**

**Finishing:**  
Zinc Plated Screw and Washer

**Standard Thread:**  
Screw pressed on the washer



## Antivibrante Sgolato Maschio/Maschio Sand-Glass Mounting



Code	A	B	C	D	E	Carico max a Compres. daN Max Compression Load daN	Carico max a Taglio daN Max Shear Load daN	Confezione Pz Packing Pcs.
A2MS12	12	15	M4	7	10	3	0,8	1
A2MS25	25	20	M6	10	18	50	3	1
A2MS30	30	20	M8	24	23	60	10	1
A2MS40	40	30	M8	19	20	80	6	1
A2MS40L	40	30	M8	27	20	100	8	1