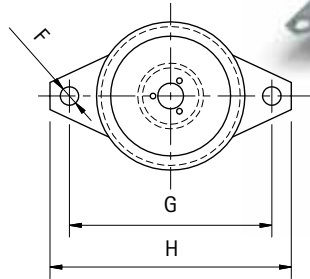
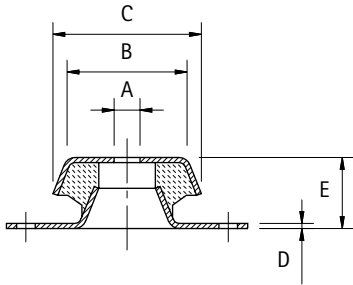


A2 Antivibration mountings with other shapes

Supporto Antivibrante a Campana con Foro Passante Bell Support with Through Hole



SC series

Caratteristiche

Versione Supporto:

Con foro passante

Materiale Corpo:

Miscela Gomma NR/SBR

Tolleranza sulla durezza:

+/- 5 SH

Parte Metallica e/o

Fissaggio:

Lamiera acciaio zincata

Product specification

Version:

With through hole

Main Part Material:

NR/SBR Rubber Compound

Hardness Tolerance:

+/- 5 SH

Metallic Part Material &

Finishing:

Zinc Plated Steel Sheet

Codice	A	B	C	D	E	F	G	H	Durezza Shore A Hardness Shore A	Carico Max Statico daN Maximum Load daN	Cedimento mm Deflection mm	Confezione Pz Packing Pcs.
A2SC50	8,5	38	48	1,5	23	6,5	68	80	60	102	3,04	1
A2SC60	10,5	50	62	2	30	8,5	85	100	60	214	3,66	1
A2SC90	16,5	72	92	3	44	10,5	110	130	60	343	3,02	1
A2SC120	24,5	95	119	4	48	16,5	160	190	60	641	3,71	1
A2SC160	30,5	125	158	5	60	16,5	200	230	60	1211	3,36	1
A2SC50-45	8,5	38	48	1,5	23	6,5	68	80	45	96	3,18	1
A2SC60-45	10,5	50	62	2	30	8,5	85	100	45	192	5,03	1
A2SC90-45	16,5	72	92	3	44	10,5	110	130	45	346	5,05	1
A2SC120-45	24,5	95	119	4	48	16,5	160	190	45	661	4,92	1