

# D603

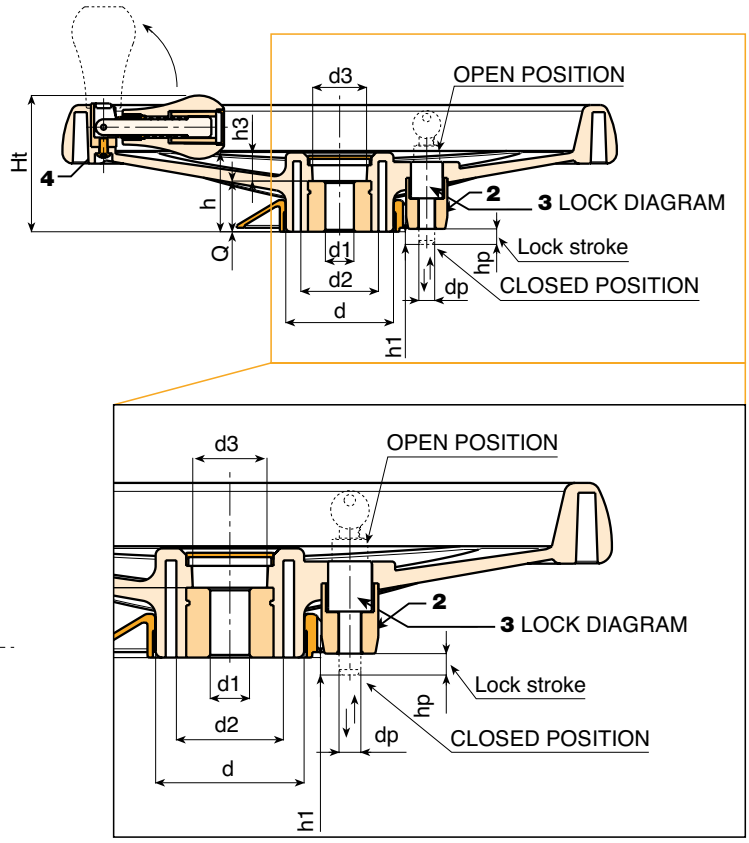
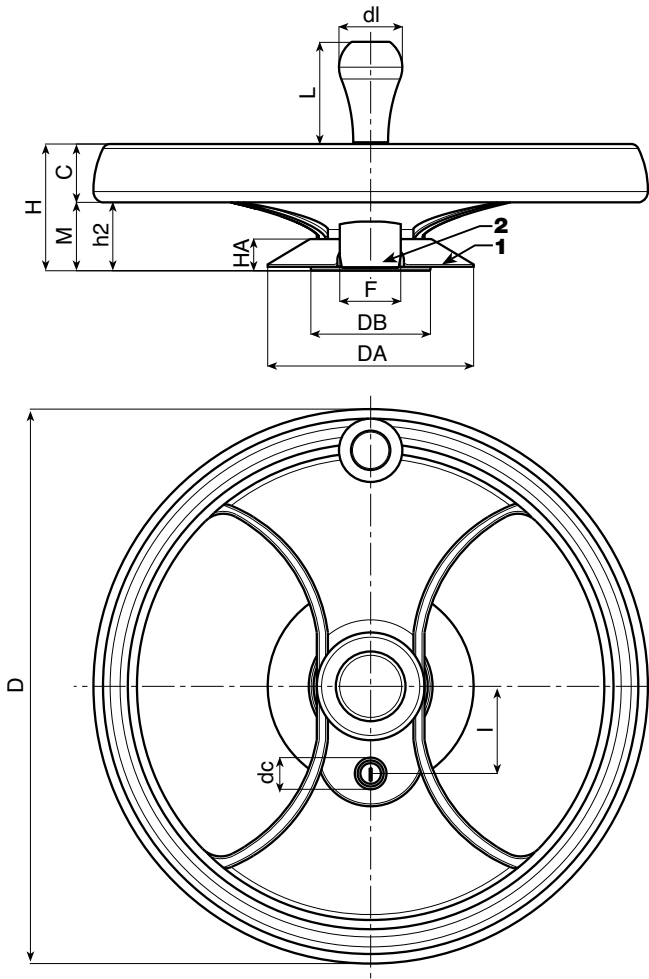
+135°  
-25°

PA6  
+GF

UL94  
HB

ROHS

## 2 SPOKE CONTROL HANDWHEEL WITH REVOLVING FOLDAWAY HANDLE AND KEY LOCK



art. D603

This type of product is an evolution of our traditional handwheel D207-350. By simply adding a special assembly kit this product can be adapted for use in a special market sector: that of compact shelving (sliding storage systems on rails). This handgrip is suitable for handling shelving on rails. A locking device or piston is used to lock, stop, position the shelving units in specific positions.



Art.	D	H	Ht	h	d	M	C	h2	h3	d2	d3	Dm	d1	H11	Q	g
D603350.TD..01P	346	80	86	49,5	67,5	24	56	43,5	17,5	49	35	28	A.R.	32	1800	

Dm = It's possible to increase the hole, by boring, until Dm (enlarge). A.R. = By request

**D - CONTROL HANDWHEELS**

ver. DUK.10-0113



**BOTECO**

D - 12

Presumable presence in the stock in %

(☹) 90% (😊) 40% (😐) 5% (☹)

www.boteco.it - © All right reserved - BOTECO®

Any unauthorized reproduction is strictly forbidden

# 2 SPOKE CONTROL HANDWHEEL WITH REVOLVING HANDLE AND KEY LOCK

## D604



### Material:

Reinforced and stabilised polyamide. Oils and greases resistant.

**Surface:** Satin.

**Colour:** Black (RAL 9011).

**Central Cap:** Grey polyamide (RAL 7035 cod. 13).

### Alternative Cap Colour:

Orange (RAL 2004 cod. 02)

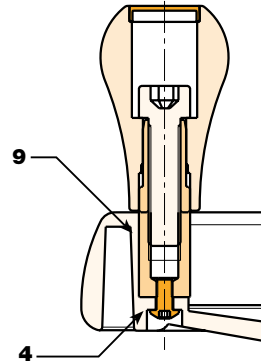
Blue (RAL 5015 cod. 07)

Yellow (RAL 1021 cod. 10)

Red (RAL 3000 cod. 16)

Green (RAL 6024 cod. 17)

Black (RAL 9011 cod. 01)



### Clamping Lock Kit:

(1) PA6+GF hole cover ring. Black (RAL 9011).  
Push-fit assembly. Removable.

(2) PA6+GF piston holder. Black (RAL 9011). Assembly using two self-tapping, galvanised steel screws, screwdriver head 3.5x30.

(3) Nickel plated lock. Two numbered keys provided. Key can be removed from either position.  
To close handwheel push and turn the key 90°. Lock stroke 10 mm. Useful projection of pin from handwheel 8 mm. Keys supplied secured to the handwheel rim.

### Inserts:

(1) Customised galvanised steel through-hole insert.

(4) Black-oxide treated hexagon socket button head screw ISO 7838 for fastening handle.

(9) (art. D604) Black-oxide treated steel insert with hexagonal threaded through-hole.

### Side Handle:

(art. D601) Flush, foldaway revolving handle, with hexagonal connection. Made from reinforced polyamide (shape same as art. M202). Black-oxide treated internal mechanism.  
Fixing by means of black-oxide treated hexagon socket button head screw ISO 7838.  
Grey polyamide push fit cap (RAL 7035 code 13).

(art. D604) Revolving handle Art. M202 (see Chapter M on page 18).



*For fixing system, or execution of keyway or square holes, please refer to the technical notes attached to the catalogue.*

### SPECIAL REQUEST:

- It's possible to supply the inserts with d1 bore by customer design, on request and for quantities.
- It's possible to supply the inserts in different material and treatment-finishes, on request and for quantities.
- It's possible to supply the products with colours (reduced range) as shown in the table at page D-19, on request and for quantities.



art. D604

Art.	D	H	Ht	h	d	M	C	h2	h3	d2	d3	Dm	d1	H11	Q	g
D604350.TD..01P	346	80	86	49,5	67,5	24	56	43,5	17,5	49	35	28	A.R.	32	1800	
	I	dc	h1	dp	hp	DA	HA	DB	F							
	55	20	8	10	10	131	20	76	38							

**Dm** = It's possible to increase the hole, by boring, until Dm (enlarge). **A.R.** = By request

Presumable presence in the stock in %

(🏠) 90% (😊) 40% (😐) 5% (😞)

BOTECO® - © All right reserved - [www.boteco.it](http://www.boteco.it)

Any unauthorized reproduction is strictly forbidden



BOTECO

**D - CONTROL  
HANDWHEELS**