

SOLID 6 LOBE KNOB WITH FEMALE THREADED INSERT

F110



Material:

Reinforced polyamide.
Oils and greases resistant.

Surface:

Satin.

Colour:

Black (RAL 9011).

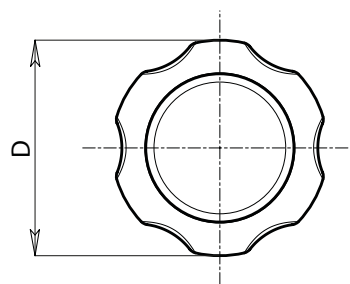
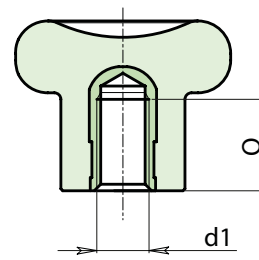
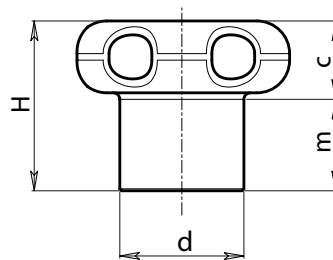
Main Insert:

Brass blind threaded bush (tolerance 6H).



SPECIAL REQUEST:

- It is possible to supply the inserts in different materials, on request and for quantities.
- It is possible to supply colours as shown in the table at pag. F-35, on request and for quantities.



| ☺ | Art. | D | d | H | m | c | d1 6H | Q | ⚖ g |
|---|----------------|----|----|------|----|-----|-------|----|-----|
| ☺ | F110022.TM0401 | 22 | 12 | 17,5 | 11 | 6,5 | M04 | 8 | 5,5 |
| ☺ | F110022.TM0501 | 22 | 12 | 17,5 | 11 | 6,5 | M05 | 8 | 6,5 |
| ☺ | F110027.TM0501 | 27 | 14 | 22 | 13 | 9 | M05 | 10 | 9 |
| ☺ | F110027.TM0601 | 27 | 14 | 22 | 13 | 9 | M06 | 10 | 9,5 |
| ☺ | F110033.TM0801 | 33 | 19 | 26 | 15 | 11 | M08 | 13 | 16 |
| ☺ | F110033.TM1001 | 33 | 19 | 26 | 15 | 11 | M10 | 13 | 17 |

Presumable presence in the stock in %

(☺) 90% (☹) 40% (☹) 5% (☹)

BOTECO® - © All right reserved - www.boteco.it
Any unauthorized reproduction is strictly forbidden



BOTECO