

KNURLED HANDWHEEL WITHOUT HUB AND THREADED STUD

H760



Material:

Reinforced polyamide.
Oils and greases resistant.

Surface:

Satin.

Colour:

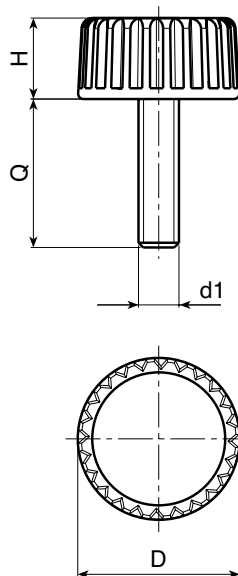
Black (RAL 9011).

Main Insert:

Zinc plated steel threaded stud (tolerance 6g).

SPECIAL REQUESTS:

- It is possible to supply inserts in different lengths or by special design, on request and for quantities.
- It is possible to supply inserts in different materials, on request and for quantities.
- It is possible to supply colours as shown in the table on page H-19, on request and for quantities.



art.	D	H	LM	d1 6g	Q	g
H76015.TM04X..01	15	8	77	M04	15-19-24	2-2,5-3
H76015.TM05X..01	15	8	77	M05	15-19-24-29	4-4,5-5-5,5
H76015.TM06X..01	15	8	77	M06	15-19-24-29	5,5-6,5-7-7,5

Enter the stud length choice in the two .. of the article code. Lengths by request with 250 pieces minimum quantity.

LM = Maximum mouldable length.

Presumable presence in the stock in %

(🏠) 90% (☺) 40% (☹) 5% (⊖)

BOTECO® - © All right reserved - www.boteco.it

Any unauthorized reproduction is strictly forbidden



BOTECO