

KNURLED HANDWHEEL WITH SCREWDRIVERS SLOT AND THREADED FEMALE INSERT

H773



PA6
+GF

UL94
HB



Material:

Reinforced polyamide.
Oils and greases resistant.

Surface:

Satin.

Colour:

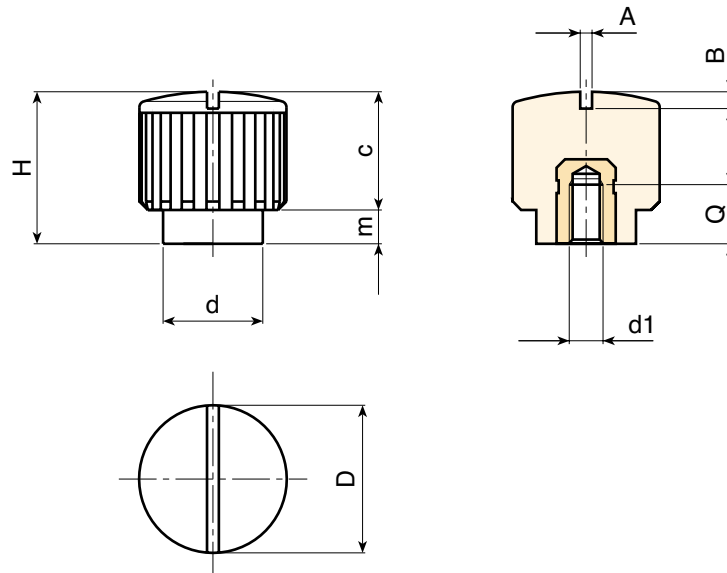
Black (RAL 9011).

Main Insert:

Brass blind threaded bush (tolerance 6H).

SPECIAL REQUEST:

- It is possible to supply the inserts in different materials, on request and for quantities.
- It is possible to supply colours as shown in the table at pag. H-19, on request and for quantities.



	art.	D	H	d	m	c	A	B	d1 6H	Q	g
	H77318.TM0401	17,5	18	12	4	14	1,2	1,5	M04	7	6,5
	H77318.TM0501	17,5	18	12	4	14	1,2	1,5	M05	7	7
	H77318.TM0601	17,5	18	12	4	14	1,2	1,5	M06	7	7

Presumable presence in the stock in %

() 90% () 40% () 5% () 0%

BOTECO® - © All right reserved - www.boteco.it
Any unauthorized reproduction is strictly forbidden



BOTECO

H - 15

**H - KNURLED
HANDWHEELS**

ver. HUK.10-0113