

# J188

## LIGHT DUTY TOGGLE LATCH



### Materials:

- (1) Sheared and bent steel body.
- (2) Sheared and bent steel catch plate.
- (3) Moulded and threaded steel hook.
- (4) Stainless steel fixing rivets (Aisi 304).

### Surface finish:

Smooth.

### Colour:

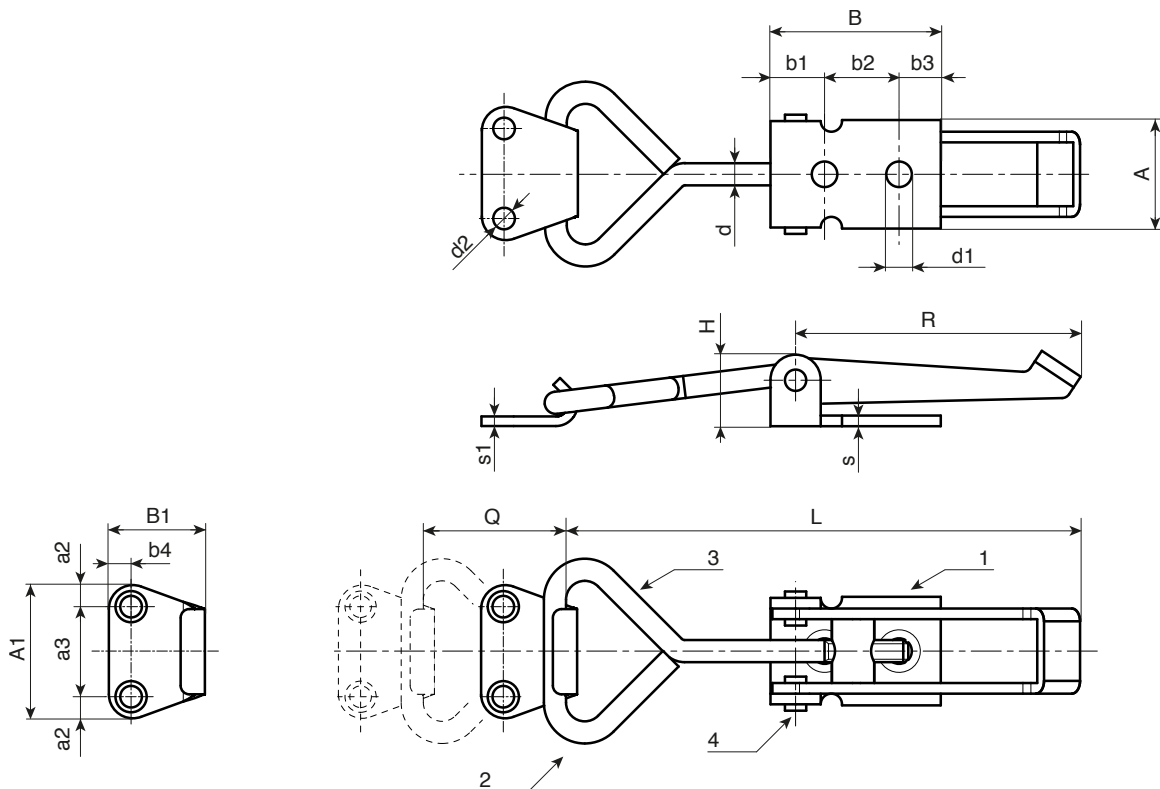
Natural.

### Packaging:

The article comes complete with the corresponding standard catch plate.

### Special Requests:

- Upon request and for special quantities the article can be supplied in stainless steel.



art.	R	L	Q	H	A	B	A1	B1	b1	b2	b3	b4	a2	a3	s	s1	d	d1	d2	g
J188040.FZ	40	75	0÷15	15	20.5	29.5	25	22	5.5	18	6	4.5	5.5	14	2	2	4	4.7	4.5	56
J188060.FZ	60	98	0÷25	17	25.5	40	30	24	13	17.5	9.5	6	6.5	17	2.5	3	5	6	4.5	83